



Australian Government

Department of Education, Employment  
and Workplace Relations

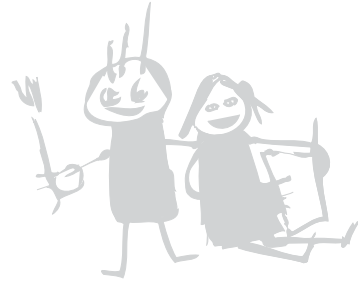
Office of  
Early Childhood Education  
& Child Care



**2006 Australian Government  
Census of Child Care Services  
Summary Booklet**







**2006 Australian Government  
Census of Child Care Services**  
Summary Booklet

© Commonwealth of Australia 2008

This work is copyright. You may download, display, print and reproduce this material in unaltered form only (retaining this notice) for your personal, non-commercial use or use within your organisation. Apart from any use as permitted under the *Copyright Act 1968*, all other rights are reserved. Requests for further authorisation should be directed to the Commonwealth Copyright Administration, Attorney-General's Department, Robert Garran Offices, National Circuit, Canberra ACT 2600 or posted at <http://www.ag.gov.au/cca>

Canberra, Australian Capital Territory



# TABLE OF CONTENTS

<b>INTRODUCTION</b>	<b>1</b>
<b>THE CENSUS</b>	<b>5</b>
• Process	5
• Context	6
<b>SUMMARY OF FINDINGS</b>	<b>7</b>
<b>RESULTS AND ANALYSIS</b>	<b>9</b>
<b>Services</b>	<b>9</b>
• Opening hours	10
• Fees	10
• Utilisation	11
<b>Children</b>	<b>11</b>
• Age of children	12
• Hours of attendance per week	14
• Paid hours per week	14
• Priority groups	14
• Children at risk	15
• Work-related care	15
• Additional needs children	15
<b>Child Care Benefit</b>	<b>17</b>
<b>Pre-school programs in child care</b>	<b>18</b>
<b>Staff</b>	<b>18</b>
• Number of staff	18
• Staff per service	19
• Formal qualifications	19
• In-service training	19
• Hours worked	20
• Major type of work	20



## LIST OF TABLES

All tables are by type of service for each State, Territory and Australia, 2006

### Summary Tables

<b>Table 1</b>	Respondent services as a percentage of all services	21
<b>Table 2</b>	Number and percentage distribution of children attending	22
<b>Table 3</b>	Number and percentage distribution of paid staff, family day care and in home care caregivers	23
<b>Table 4</b>	Number and percentage distribution of families	24
<b>Table 5</b>	Number and percentage distribution of children in care for work related vs. non-work related reasons – long day care	25
<b>Table 6</b>	Number and percentage distribution of children in care for work related vs. non-work related reasons – family day care	26
<b>Table 7</b>	Number and percentage distribution of children in care for work related vs. non-work related reasons – in home care	27
<b>Table 8</b>	Number and percentage distribution of children in care for work related vs. non-work related reasons – outside school hours care	28
<b>Table 9</b>	Number and percentage distribution of children in care for work related vs. non-work related reasons – vacation care	29
<b>Table 10</b>	Number and percentage distribution of children in care for work related vs. non-work related reasons – occasional care	30
<b>Table 11</b>	Number and percentage distribution of children in care for work related vs non-work related reasons – multifunctional Aboriginal children's services	31
<b>Table 12</b>	Number and percentage distribution of children in care by additional needs group – long day care	32
<b>Table 13</b>	Number and percentage distribution of children in care by additional needs group – family day care	33
<b>Table 14</b>	Number and percentage distribution of children in care by additional needs group – in home care	34
<b>Table 15</b>	Number and percentage distribution of children in care by additional needs group – outside school hours care	35
<b>Table 16</b>	Number and percentage distribution of children in care by additional needs group – vacation care	36
<b>Table 17</b>	Number and percentage distribution of children in care by additional needs group – occasional care	37
<b>Table 18</b>	Number and percentage distribution of children in care by additional needs group – multifunctional Aboriginal children's services	38
<b>Table 19</b>	Number and percentage distribution of children in care by additional needs group – mobile and toy libraries	39
<b>Table 20</b>	Number and percentage distribution of children in care by age groups– long day care	40

<b>Table 21</b>	Number and percentage distribution of children in care by age groups– family day care	41
<b>Table 22</b>	Number and percentage distribution of children in care by age groups– in home care	42
<b>Table 23</b>	Number and percentage distribution of children in care by age groups– outside school hours care	43
<b>Table 24</b>	Number and percentage distribution of children in care by age groups– vacation care	44
<b>Table 25</b>	Number and percentage distribution of children in care by age groups– occasional care	45
<b>Table 26</b>	Number and percentage distribution of children in care by age groups– multifunctional Aboriginal children’s services	46
<b>Table 27</b>	Number and percentage distribution of children in care by age groups– mobile and toy libraries	47
<b>Table 28</b>	Number and percentage distribution of children in care by hours of attendance – long day care	48
<b>Table 29</b>	Number and percentage distribution of children in care by hours of attendance – family day care	49
<b>Table 30</b>	Number and percentage distribution of children in care by hours of attendance – in home care	50
<b>Table 31</b>	Number and percentage distribution of children in care by hours of attendance – outside school hours care	51
<b>Table 32</b>	Number and percentage distribution of children in care by hours of attendance – vacation care	52
<b>Table 33</b>	Number and percentage distribution of children in care by hours of attendance – occasional care	53
<b>Table 34</b>	Number and percentage distribution of children in care by hours of attendance – multifunctional Aboriginal children’s services	54
<b>Table 35</b>	Number and percentage of services offering pre-school programs and number of children participating in these programs – long day care	55
<b>Table 36</b>	Number and percentage of carers with children that went to pre-school during the collection week and number of children– family day care	56
<b>Table 37</b>	Number and percentage of carers with children that went to pre-school during the collection week and number of children– in home care	57
<b>Table 38</b>	Number and percentage of services offering pre-school programs and number of children participating in these programs – occasional care	58

## APPENDICES

<b>Appendix A – Glossary</b>	59
<b>Appendix B – List of data items in the Census</b>	65
<b>Appendix C – Further Information</b>	69



## Abbreviations

<b>APG</b>	Aboriginal Playgroup and Enrichment Programs
<b>ATO</b>	Australian Taxation Office
<b>CCB</b>	Child Care Benefit
<b>CCTR</b>	Child Care Tax Rebate
<b>DEEWR</b>	Australian Government Department of Education, Employment and Workplace Relations
<b>FaCS</b>	Australian Government Department of Family and Community Services
<b>FaCSIA</b>	Australian Government Department of Families, Community Services and Indigenous Affairs
<b>FDC</b>	Family day care
<b>F/T</b>	Full-time
<b>IHC</b>	In home care
<b>ISS</b>	Inclusion Support Subsidy
<b>IPSP</b>	The Inclusion and Professional Support Program
<b>LDC</b>	Long day care services
<b>MACS</b>	Multifunctional Aboriginal children's services
<b>MFC</b>	Multifunctional children's services
<b>MOB</b>	Mobile and toy library services
<b>No.</b>	Number
<b>OCC</b>	Occasional care services
<b>OSHC</b>	Outside school hours care
<b>P/T</b>	Part-time
<b>SUPS</b>	Supplementary Services
<b>SNSS</b>	Special Needs Subsidy Scheme
<b>VAC</b>	Vacation care services
<b>WKS</b>	Weeks
<b>YRS</b>	Years



## INTRODUCTION

Child care is an integral part of the Government's commitment to promoting universal access to quality early childhood education and to increasing workforce participation.

The vast majority of child care funding goes towards the payment of Child Care Benefit (CCB) and the Child Care Tax Rebate (CCTR), which assist parents with the cost of child care. In particular, Australian Government support for child care contributes by:

- ▶ helping families to participate in the economic and social life of the community through assisting families with the cost of child care;
- ▶ helping families to balance their work and parenting roles by promoting and supporting the provision of flexible child care services;
- ▶ developing and educating children through funding quality assurance of child care services and professional development for the child care sector; and
- ▶ providing access to early childhood intervention and prevention initiatives for vulnerable families and children through funding child care programs.

The Australian Government Census of Child Care Services has been conducted regularly since 1986. Census information has been important for determining Australian Government objectives relating to child care are being met, and for future planning and policy development.

The information provided in the Census is the most comprehensive data available on Australian Government approved and supported child care services. It is used extensively for monitoring growth in the sector and assisting in policy formulation and planning.

This booklet details the findings of the 2006 Census of Child Care Services conducted by the Australian Government Department of Families, Community Services and Indigenous Affairs. It provides details of child care users, staff and carers and operational details of child care services. The specific week in which services were surveyed is referred to as the 'reference week' for the Census.

The report contains information about 9 child care service types. The following table (Table A) indicates the dates each service type was surveyed:



**Table A: Census dates for the 2006 Australian Government Census of Child Care Services.**

Service Type	Date of Census (2006)
Long Day Care centres	8 to 14 May
Family Day Care schemes	8 to 14 May
In home care services	8 to 14 May
Outside School Hours Care services	8 to 14 May
Vacation Care services <sup>(1)</sup> – Tas	5 to 9 June
– Qld, Vic, NT	26 to 30 June
– NSW, ACT, SA, WA	10 July to 14 July
Occasional Care services	8 to 14 May
Multifunctional Aboriginal Children's services	8 to 14 May
Mobile and Toy Library services	8 to 21 May
Aboriginal Playgroups	8 to 14 May

(1) Date variations were due to the different vacation care periods across Australia.

A brief description of each service type is included in the glossary in Appendix A.

Appendix B shows the complete list of data items collected.

The following points should be noted when analysing data from the 2006 Australian Government Census of Child Care Services and when comparing data from previous years:

- D Unless stated otherwise, the data in this report has not been weighted up for non-responding services. This is consistent with the data in the previous reports, with the exception of the 1996/1997 Census where data was weighted up for non-responding services. In comparing counts of services, children and staff across Censuses, response rates must be taken into account.
- D The 2006 Census, 2004 Census and all Censuses prior to that which surveyed family day care schemes surveyed all family day care schemes. However, due to the introduction of Child Care Benefit, the 2001 Census only surveyed family day care schemes using the 'Harmony' software system. For this reason care should be taken in comparing family day care results between the 2001 Census and other Censuses.
- D On 1 July 2000 Child Care Assistance and the Child Care Cash Rebate were replaced by the new Child Care Benefit payment. Child Care Benefit extended eligibility to a wider range of families and increased benefits available by making the income test more generous.
- D On 1 July 2004 the Child Care Tax Rebate (CCTR) was introduced to further assist families with the cost of approved child care and to support families in balancing work and study commitments. At the time of the 2006 Census CCTR covered 30 per cent of out-of-pocket expenses (total child care fees less Child Care Benefit) for approved child care for eligible families. The maximum amount of CCTR that can be paid to families varies each financial year.
- D The 2006 Census was conducted in the month of May, as was the 2002 and 1999 Censuses. The 2004 Census was conducted in March. The 1997 Census and previous Censuses were conducted in the month of August.

- ▶ The 2006 Census saw the introduction of a number of Children's Services National Minimum Data Set items, resulting in definitional changes to the classification of staff. In previous Census years, staff in child care services were classified according to how they spent the majority of their time i.e. caring for children (contact staff) or undertaking administrative/other duties (non-contact staff). In 2006, the distinction was made between primary contact staff who spend the majority of their working day caring for children and other contact staff who undertake a mix of contact/non-contact work. For this reason, 2006 Census data on staff roles is not comparable with previous years.
- ▶ Since the 2004 Census the Family Day Care industry has seen a widespread deregulation of fees. This means that carers are able to charge their own fees rather than using those set by the service. Due to this deregulation there was a change in the fee calculation methodology for Family Day Care Services in the 2006 Census. As such, fees reported in the 2006 Census are not directly comparable with previous years







## THE CENSUS

### Process

Questionnaires were sent to Australian Government approved and supported child care services, which were operational during the reference week (see Table A).

The 2006 Census saw the introduction of a custom designed computer application for filling out the Census forms. This option was made available to all Family Day Care, Long Day Care, In home Care, Out of School Hours Care, Vacation Care and Occasional Care services. Overall, 83% of these services opted to use the electronic form. Family Day Care had the highest uptake with 98% of all forms returned electronically, while Vacation care had the lowest usage with only 66% of services using the electronic form.

Data on service operation and characteristics of the children, parents and staff were recorded. Returned forms underwent clerical and computer checking before being included in the final analysis.

A high proportion of services participated in the Census (see Table 1 of Summary Tables). A total of 10,006 operational services were asked to participate in the 2006 Australian Government Census of Child Care Services. Of these, 8,621 services provided information that has been included in this report. Table B presents a breakdown of the response rates for each type of service for the 2006 and 2004 Census.

**Table B: Census response rate by service type and Census year**

Service Type	Response Rates	
	2004	2006
Long Day Care	88%	89%
Family Day Care	98%	95%
In home Care	94%	92%
Outside School Hours Care	88%	84%
Vacation Care	82%	80%
Occasional Care	96%	96%
Multifunctional Aboriginal Children's Services	86%	82%
Multifunctional Children's Services	100%	NA
Mobile and Toy Library Services	90%	87%
Aboriginal Playgroups	100%	75%
TOTAL	88%	86%

(1) Note: Multifunctional Children's Services were no longer a service type in 2006. Long Day Care and Family Day Care components of Multifunctional Children's Services were collected under the relevant service categories in 2006.



In 1991, the overall response rate of the Census was around 96%. The current Census response rate of 86%, while high, is consistent with the general decline in response rates evident since 1996. For the 2002, 2004 and 2006 Censuses work undertaken to help maximise response rates included consultation with child care providers prior to data collection and follow up contact with non-responding providers.

All tables included in this report are based on the response rates outlined above, and do not indicate total child care provision. Because the response rate was not 100%, the data cannot be used in absolute numbers. However, the response rate was very high and the results can be regarded as highly representative. The information provides a profile of each service type and can be used indicatively to make comparisons between States and territories, service types and to derive estimates of actual usage.

## Context

Child care is an integral part of the Australian Government's *Families and children have choices and opportunities* outcome as it helps parents to balance work and family commitments and children to learn and develop. Families can access assistance more easily since the introduction of Child Care Benefit and the creation of the Family Assistance Office network. Child care services provide resources for parents such as information, education and links to other services, supporting them in better parenting.

Since 1999, the estimated number of children using child care has risen significantly. The largest increase was seen between 1999 and 2002, from 577,500 to 732,100 children (an increase of 27%). Since 2004 the number of children has increased by 6%, from 752,760 to 801,060 children.



## SUMMARY OF FINDINGS

The following is a summary of the key findings of the 2006 Australian Government Census of Child Care Services, with a comparison to the results of the 2004 Census.

### Services

- ▶ The total number of services asked to participate in the 2006 Census was 10,006. The overall response rate for the 2006 Census was 86%. This represented a slight decline on the 2004 response rate of 88%.
- ▶ The number of child care services increased. This growth in the number of services is reflected by an increase of 534 (14%) in the number of long day care centres and an increase of 113 (8%) in the number of vacation care services. The number of outside school hours care services increased by 119 (6%).
- ▶ In 2006, the average weekly fee in long day care centres was \$233, compared to \$209 in 2004. In 2006, the average weekly fee in family day care schemes for 50 hours in care was \$215 (\$185 in 2004).
- ▶ The average fee charged per session for before and after school care increased between 2004 and 2006. In May 2006, the average fee charged per session for before school care was \$7.83, compared to \$6.68 in 2004. For after school care the average fee was \$11.83 in 2006 and \$10.28 in 2004.

### Children

- ▶ There were an estimated 801,060 children attending child care at May 2006 (this includes an estimate for non-responding services). This compares with an estimated 752,760 children attending child care in 2004 (an increase of 6%).
- ▶ At May 2006, the estimated number of children attending long day care was 420,110, compared with an estimated 383,020 in 2004.
- ▶ Eighty per cent of the children attending a long day care centre in 2006 attended that centre for less than 30 hours a week (79% in 2004). In 2006, as in 2004, 58% of the children attending a long day care centre attended for less than 20 hours a week.
- ▶ The estimated number of children attending outside school hours care (before and after school care) at May 2006 was 173,770 compared to 160,790 in 2004, an increase of 8%. The estimated number of children attending vacation care also increased by 5%, from 101,710 in 2004 to 107,280 in 2006.
- ▶ Family day care attendance declined over the period 2004 to 2006. In 2006 an estimated 84,350 children attended family day care in the reference week, down from 89,300 in 2004 (a decrease of 6%).
- ▶ At May 2006, 81% of the children attending family day care schemes attended for less than 30 hours a week.
- ▶ The number of children attending in home care remained relatively steady at 3,200 in 2006 compared to 3,240 in 2004.



- In 2006, 68% of children in in home schemes attended for less than 30 hours per week.
- The proportion of children identified as being from a culturally diverse background decreased between 2004 and 2006 from about 12% to 10%. The proportion of children identified as having a disability remained at about 2%.

## Pre-school services in child care

- In 2006, 2,068 long day care services provided children attending their service with access to a pre-school program. This represents 48% of all long day care services.
- Close to one third (32%) of long day care services offered an in-house preschool program run by a qualified teacher <sup>1</sup> and 14% took children out to a local pre-school. Two per cent offered both an in-house pre-school program run by a qualified teacher and took children out to a local pre-school.
- At May 2006, 22% of children aged 3 to 4 years in long day care participated in in-house preschool programs run by a qualified early childhood teacher.

## Staff

- At May 2006, an estimated 90,485 paid and 1,440 unpaid staff (this includes an estimate for non-responding services), including staff working in family day care coordination units, were providing care in Australian Government approved and supported services. There were also an estimated 11,080 family day care caregivers providing care in their own homes and 845 in home care caregivers providing care in other people's homes.
  - This compares with an estimated 82,275 paid and 2,995 unpaid staff in 2004. There were an estimated 12,018 family day care caregivers and 846 in home caregivers in 2004.
- At March 2006, an estimated 57,816 paid and 851 unpaid staff were providing care in long day care centres.
- Of all long day care centre staff, 75 % were employed on a permanent basis, 3% were on a fixed contract and 21% were employed on a casual basis. <sup>2</sup>
- On average staff in long day care centres worked slightly longer hours in 2006 than in 2004. In 2006, staff worked an average of 28 hours and 57 minutes per week compared to 28 hours and 17 minutes in 2004.
- Sixty-one percent of all long day care centre staff held a qualification relevant to the sector in 2006 (60% in 2004). In 2006, the proportion of family day care caregivers with a relevant qualification was 31%, up from 25% in 2004. The proportion of in home care caregivers with a relevant qualification also increased from 32% in 2004 to 46% in 2006. The proportion of staff with a relevant qualification in outside school hours and vacation care was 48%.

<sup>1</sup> Includes pre-school programs run by qualified early childhood education teachers only (excludes one and two year qualifications).

<sup>2</sup> This data can not be compared with 2004 data due to changes in the information collected in the Census. In 2004, child care services were asked to provide information on whether staff worked on a full-time, part-time or casual basis. In 2006, the focus of the data collected was changed to assess whether staff were employed on a permanent, contract or casual basis.



## RESULTS AND ANALYSIS

### Services

Half (50%) of the 8,621 services participating in the Census for 2006 were long day care centres (see Table C below), catering for an average of 86 children per centre (see Table D) during the reference week. Family day care schemes represented 4% of total services and catered for an average of 266 children per service. Outside school hours care services made up 26% of total services, with an average of 65 children per service, while vacation care services (17%) catered for an average of 59 children per service.

**Table C: The distribution of respondent services in the Australian Government Census of Child Care Services, 2006 compared with 2004.**

Service Type	Number of respondent services 2004	%	Number of respondent services 2006	%
Long day care centres	3812	48	4,346	50
Family day care schemes	318	4	305	4
In home care schemes	68	1	70	1
Outside school hours care services	2,137	27	2,256	26
Vacation care services	1,340	17	1,453	17
Occasional care services	101	1	96	1
Other service types	125	2	95	1
Total	7,901	100	8,621	100

Note: Percentages may not add to 100 due to rounding

- (1) Note: In 2006 'other service types' includes Multifunctional Aboriginal Children's Services, Mobile and Toy Library Services, and Aboriginal Playgroups and Enrichment Programs. In 2004, 'other service types' also included Multifunctional Children's Services.

**Table D: The number of services and children, and the average number of children per service by service type 2002, 2004 and 2006 Australian Government Census of Child Care Services (unweighted data).**

Service Type	2002 Census	2004 Census	2006 Census
<b>Long Day Care</b>			
Services	3431	3812	4,346
Children	308,132	338,667	374,878
Average children per service	89.8	88.8	86.3
<b>Family Day Care</b>			
Services	318	318	305
Children	93,450	88,408	81,212
Average children per service	293.8	278.0	266.3
<b>Outside school hours care</b>			
Services	2,098	2,137	2,256
Children	131,433	142,513	145,857
Average children per service	62.6	66.7	64.7
<b>Vacation care</b>			
Services	1,275	1,340	1453
Children	82,339	84,543	86,360
Average children per service	64.6	63.1	59.4



## Opening hours

Long day care centres opened on average 10 hours 53 minutes per day with 93% of centres open for 10 hours a day or more. Very few respondent long day care centres operated on weekends, just 21 in total. Of these services, six operated on both Saturday and Sunday

The main use of family day care schemes occurred between the hours of 7am and 6:30pm on weekdays. However, family day care also provided extended hours of care. Around 4% of children in family day care received overnight care on a weekday (between the hours of 6.30pm and 7am) and 4% received care on the weekend (between 6.30pm Friday to 7am Monday). A further 4% of children in family day care received both overnight and weekend care.

In home care services also provided extended hours of care. As might be expected in this more flexible form of service delivery, a much higher proportion of children (12%) received overnight care on a weekday. Around 12% of children using in home care services received care on the weekend and a further 20% received care both overnight and on the weekend.

After school care services provided an average of 3 hours 3 minutes of care per day and before school care provided an average of 1 hour 53 minutes of care per day. Vacation care services operated on average 10 hours 37 minutes per day.

Occasional care services were open for 8 hours 18 minutes per day on average. The average opening time for multifunctional Aboriginal children's services was 9 hours 7 minutes per day.

## Fees

The average weekly fee<sup>3</sup> for long day care centres was \$233. In family day care schemes the average weekly fee was \$215. Outside school hours care services charged on average \$7.83 per session for before school care and \$11.83 per session for after school care. Vacation care services charged an average of \$157 per week.

Occasional care and in home care services usually charge on an hourly basis. The average hourly fee for occasional care was \$6.36 and \$13.48 per hour for in home care.

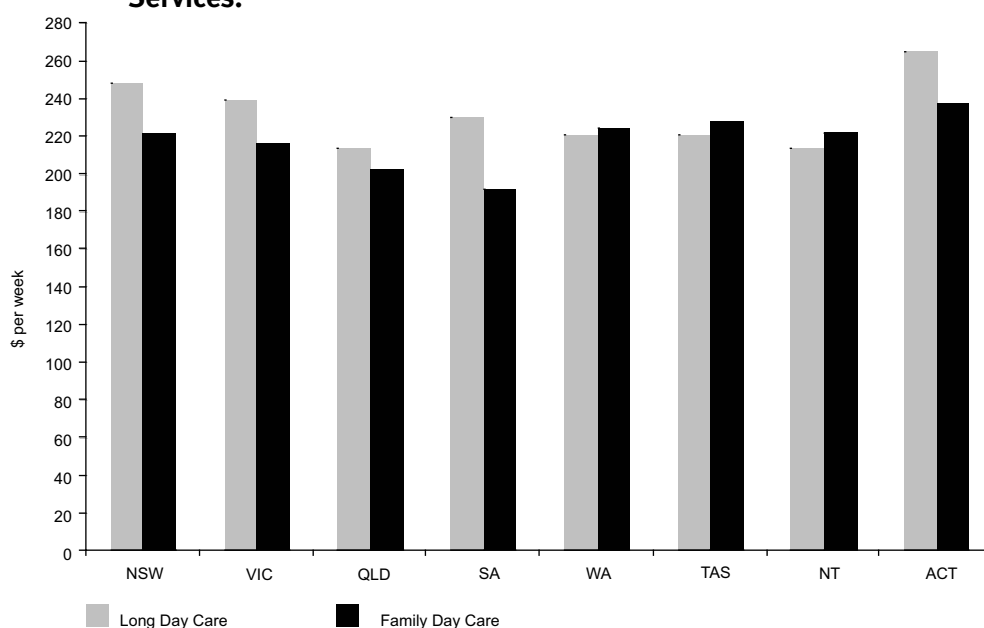
### *State comparison*

The Australian Capital Territory had the highest average weekly fees for long day care and family day care (\$265 and \$238 respectively). The lowest average fees for long day care were in the Northern Territory and Queensland (both \$214), while South Australia had the lowest average fees for family day care at \$192 per week (see Figure 1 below).

Variations in fees may be due to a number of factors including different State and Territory licensing requirements that determine child/staff ratios, accommodation costs and whether the fee includes charges for additional services such as nappies and meals.

<sup>3</sup> A week of care is defined as 50 hours for long day care, family day care and vacation care.

**Figure 1: Comparison of average weekly fees (50 hours of care) by service type by state from the 2006 Australian Government Census of Child Care Services.**



For long day care centres, the Census includes tables on specific fees for different age groups ie. 1 year olds, 2 year olds and 3 year olds (the 3 year old fee is usually paid by the 4-5 year old age group as well). During the Census reference week the average weekly fee was \$248 for 1 year olds, \$242 for 2 year olds and \$236 for 3 year olds. In 2004, the average fee for 1 year olds was \$217, \$211 for 2 year olds and \$206 for 3 year olds.

### Utilisation

Utilisation in this publication was measured as the total child hours paid for (where this was collected, otherwise total child hours attended) as a percentage of capacity. The capacity of services relates to the number of places available and the number of hours the service is open.

In 2006, the average utilisation in long day care centres was 74%, compared to 85% in 2004. In 2006, the average utilisation in family day care schemes was 63% (68% in 2004).

The decline in utilisation for long day care and family day care between 2004 and 2006 can be attributed to a decrease in the number of child hours paid (see *Results and Analysis, children*), while the capacity of services has increased.

### Children

As at March 2006, it was estimated that around 801,060 children (this includes an estimate of non-respondent services) attended Australian Government approved and supported child care services (this data measures occurrences of care and will include some double counting where children attend more than one service) (see Table E below). This is an increase of approximately 48,300 (or 6%) since 2004.

Of the children in Australian Government approved and supported child care, approximately 52% (420,110) were in long day care. This represents an increase of around 37,090 (or 10%) since 2004. In contrast, the number of children in family day care was 84,350 in 2006, down from 89,300 in 2004 and 95,630 in 2002. During the same period, the number of family day care carers has also declined from 12,816 in 2002 to 12,018 in 2004 and 11,081 in 2006.

Between 2004 and 2006, the number of children accessing in home care services remained relatively stable (3,240 in 2004 and 3,200 in 2006). The number of children in outside school hours care services was 173,770 in 2006, compared to 160,790 in 2004 (an increase of 8%). The number of children in vacation care services increased by 5% between 2004 and 2006 from 101,710 to 107,280.

**Table E: Children by service type (including estimates for non-responding services) for the 2002, 2004 and 2006 Australian Government Census of Child Care Services.**

	2002		2004		2006	
	Est. No.	%	Est. No.	%	Est. No.	%
Long day care	367,140	50	383,020	51	420,110	52
Family day care	95,630	13	89,300	12	84,350	11
In home care	1,500	1	3,240	1	3,200	1
Outside school hours care	148,040	20	160,790 <sup>1</sup>	21	173,770	22
Vacation care	103,560	14	101,710	14	107,280	13
Other service types	16,280	2 <sup>1</sup>	14,700	2 <sup>1</sup>	12,350	2
TOTAL	732,150	100	752,760 <sup>1</sup>	100	801,060	100

Note: Percentages may not add to 100 due to rounding

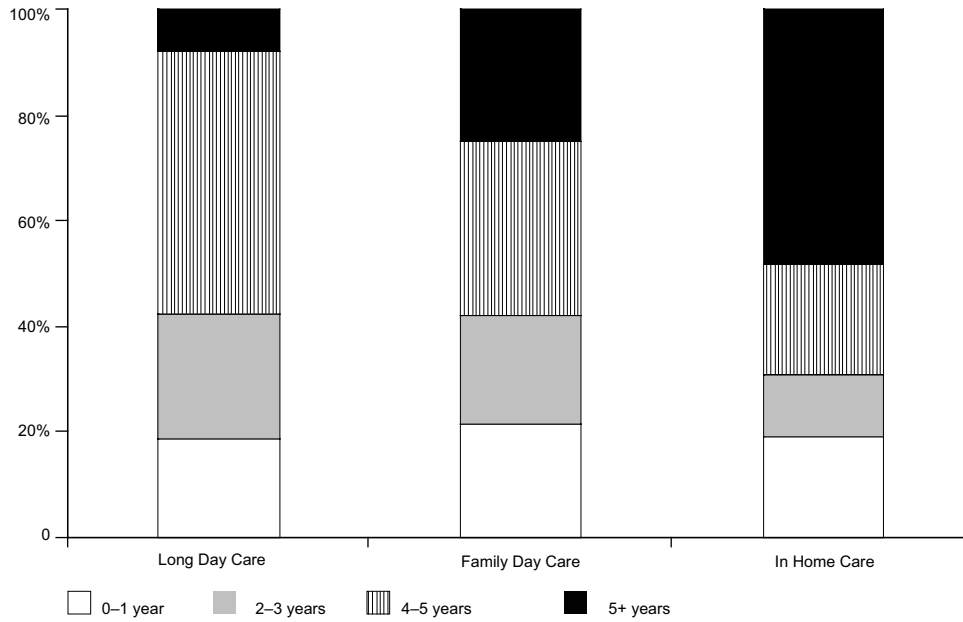
(1) Note: This data differs from numbers published in the 2004 report due to changes in rounding.

### Ages of children

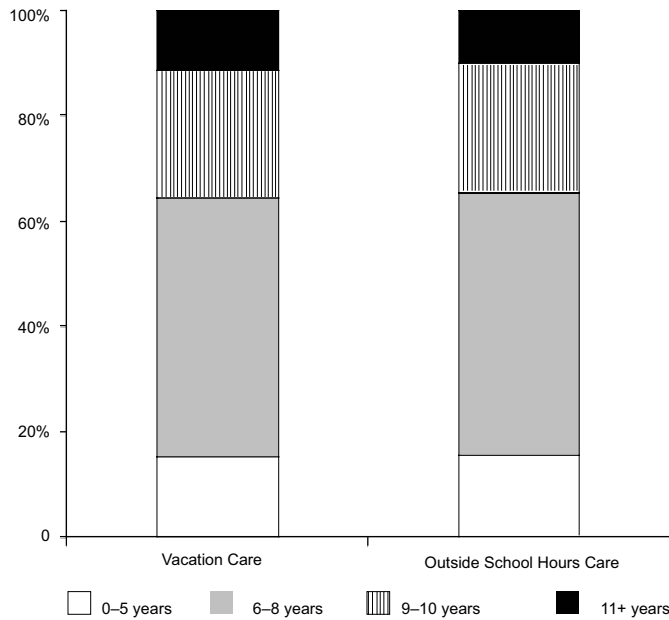
Approximately 92% of children in Australian Government approved long day care services were under 5 years of age (see Figures 2a and 2b below). Nineteen per cent of children in long day care centres (17% in 2004) and in home care schemes (22% in 2004) were under 2 years of age. In May 2006 21% of children in family day care schemes were aged less than 2 years (22% in 2004).

**Figures 2a and 2b: Age distribution of children by service type for the 2006 Australian Government Census of Child Care Services.**

**Fig.2a**



**Fig.2b**



At the time of the Census, 5% of children in Australian Government approved long day care centres attended school, the same as in 2004. In 2006, as in 2004, approximately 23% of children using family day care attended school.



### **Hours of attendance per week**

While 93% of long day care centres open for 50 hours or more a week, only 3% of children attended care for 50 hours or more. As in 2004, the Northern Territory and the Australian Capital Territory had the highest proportion of children in full-time long day care (34% and 20% respectively in care for 40 hours per week or more). Tasmania had the lowest proportion of children in full-time long day care (5% in 2006).

The majority of children in long day care and family day care attended for less than 20 hours per week during the Census reference week. In long day care centres, more than half of children (58%) attended for less than 20 hours per week, and 24% attended for less than 10 hours per week. Sixty-four per cent of children in family day care attended for less than 20 hours and 34% attended for less than 10 hours per week.

The hours of attendance for children attending in home care increased between 2004 and 2006. In 2006, 16% of children attended for more than 50 hours per week compared to 12% in 2004.

The trend of increased hours of attendance for children using occasional care continued in the 2006 Census. In 2006, 38% of children using occasional care services attended for more than 10 hours, compared with 35% in 2004, 33% in 2002 and 23% in 1999.

### **Paid hours per week**

As in previous Census years, paid hours of care for long day care centres, were on average higher than actual hours of care used (24 hours 50 minutes paid, 19 hours 53 minutes per week attended). The variation between paid and attendance hours can be attributed to both allowable absences and the difference between actual usage and hours booked and paid for.

In family day care schemes, paid hours were also higher on average than actual hours of care used, with similar reasons for the variation. However, the difference was not as large as for long day care (18 hours 56 minutes of paid care per week and 18 hours 9 minutes per week attended).

Compared to 2004, the average number of paid hours for long day care has declined (from 26 hours and 29 minutes in 2004), while the number of hours attended has remained the same. The average number of paid and attended hours for family day care was greater in 2004 (19 hours 15 minutes paid, 18 hours, 37 minutes attended) than in 2006.

### **Priority groups**

Some groups in the population have been designated as a high priority for access to Australian Government approved and supported child care. At the time of the 2006 Census of Child Care Services, the highest priority group was for children who are at risk of serious abuse or neglect.

The second highest priority group was children of a single parent who satisfies, or of parents who both satisfy the work/training/study test under section 14 of the A New Tax System (Family Assistance) Act 1999. The third highest priority group was all other children.

Within each of these priority groups, the following priorities were applied (in no particular order): children from Aboriginal or Torres Strait Islander families, children in families which include a disabled person, children in families on lower incomes, children from culturally and linguistically diverse backgrounds, children in socially isolated families and children of single parents.

### **Children at risk**

Less than 1% of all children using care at March 2006 were referred because of risk of serious neglect or abuse. This has not changed since the 2004 and 2002 Censuses.

### **Work-related care**

The methodology used to collect information on work related care in the 2006 Census was different to previous years. For example, the range of responses available to describe parents work/study status was changed slightly from previous Census years. For the first time in 2006 services were also given the option of filling out the Census via a custom designed computer application. Unlike the paper forms and electronic form lodgement systems, the custom computer application contained built in prompts that ensured that services provided information on the work/study status of both parents in two parent families. For this reason, data on work related care from the 2006 Census is not comparable to previous years.

During the 2006 Census reference week, 78% of children's paid for hours in long day care centres were for work related care. In family day care, 80% of children's paid for hours were for work related care.

The proportion of work related care was 93% for outside school hours care and 90% for vacation care. Sixty-six percent of children's paid hours for occasional care were for work related care.

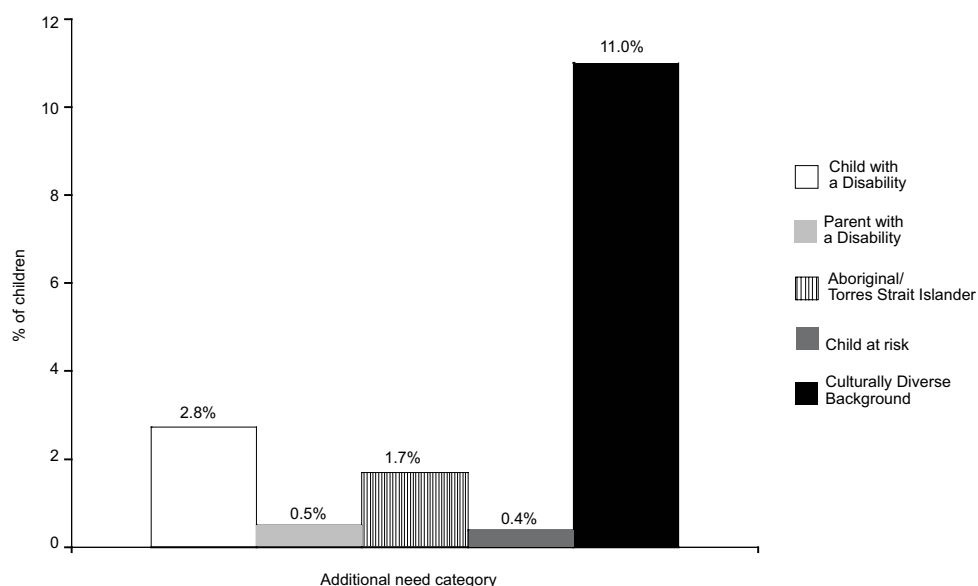
### **Additional needs children**

The Supplementary Services (SUPS) program supports Australian Government funded child care services to improve the quality of care provided by increasing the access and participation of children with additional needs and facilitating developmentally and culturally appropriate programs. The priority groups for SUPS support include children from diverse cultural and linguistic diverse backgrounds, Aboriginal and Torres Strait Islander children, Australian South Sea Islander children, and children with a diagnosed disability.

The Inclusion Support Subsidy (ISS) assists eligible child care services to improve their capacity to include children with ongoing high support needs. This can include support to the service for additional staffing to increase the

child to staff ratio, relief for staff/carers to attend specialist training and access to specialist equipment. The ISS program replaced the Special Needs Subsidy scheme (SNSS) and Disabled Supplementary Services Payment (DSUPS) on 1 July 2006.

**Figure 3: Children with additional needs as a proportion of all children in child care (all service types).**



Approximately 2% of children in long day care (including long day care services, family day care schemes and in home care schemes) were identified as being from Aboriginal or Torres Strait Islander families. Of children in long day care, Indigenous representation was highest in the Northern Territory with 7% of children. This compares with 4% of the total 0 to 4 year old Australian population identified as Indigenous or Torres Strait Islander in the 2006 ABS Census of Population and Housing.

At May 2006, the proportion of children with a disability using long day care (including long day care services, family day care schemes and in home care schemes) was 2.5%. This is a slight increase on the proportion (2.2%) reported in both 2004 and 2002. Within long day care, in home care had the highest proportion of children with a disability (7.6% in 2006). This proportion represented a decrease on the 16.0% reported in 2004. Representation was lower in long day care centres (2.6%) and family day care (2.1%).

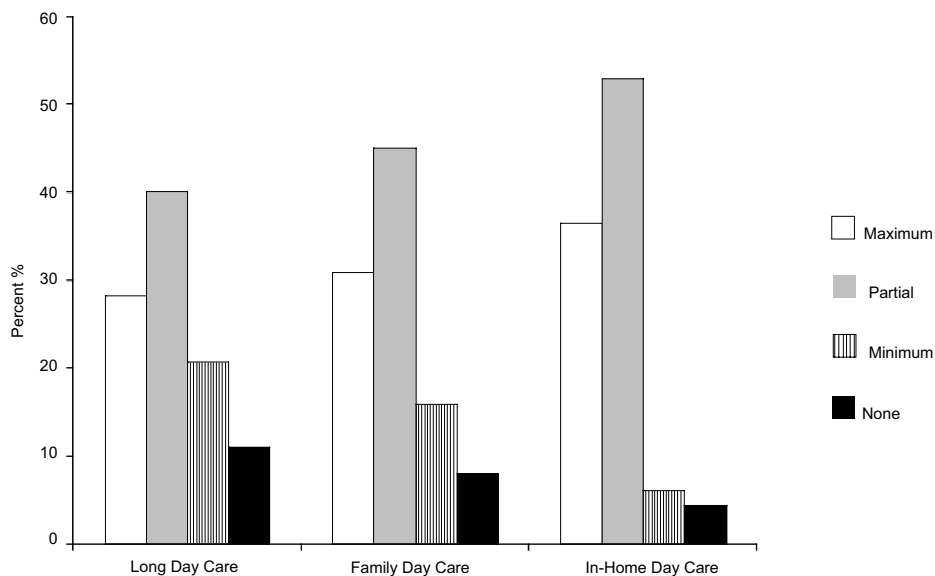
The proportion of children using long day care from a culturally diverse background at May 2006 was 12.1%. Children from culturally diverse backgrounds comprised 12.3% of children in long day care centres, 11.4% of children in family day care schemes and 4.7% of children in in home care schemes.

## Child Care Benefit

Child Care Benefit replaced Child Care Assistance and Child Care Cash Rebate from 1 July 2000. An estimated 548,654 families (this includes an estimate of non-respondent services) were assisted through Child Care Benefit fee relief at the time of the 2006 Census, up 6% on 2004. It is important to realise that those families that did not receive Child Care Benefit as fee relief are potentially able to claim their Child Care Benefit entitlement as a lump sum at the end of the financial year.

Ninety per cent of all families using long day care centres, family day care and in home care schemes received some Child Care Benefit as fee relief (see Figure 4 below). This was made up of 89% of families using long day care centres, 92% using family day care schemes and 95% of in home care schemes. Maximum Child Care Benefit was received by 29% of all families using long day care centres, family day care and in home care schemes.

**Figure 4: Proportion of families receiving Child Care Benefit as fee relief (maximum, minimum or partial rate).**



## Pre-school programs in child care

In addition to providing child care, a number of Australian Government approved and supported child care services also offer pre-school education programs.

In 2006, 48% of long day care centres (2,068) provided children attending their service with access to a pre-school program. Thirty two per cent of Long Day Care services (1,375) offered an in-house pre-school program run by a qualified teacher<sup>4</sup> and 14 % (589) took children out to a local pre-school. Two per cent (104) offered both an in-house pre-school program run by a qualified teacher and took children out to a local pre-school.

At May 2006, 71,152 children aged between 3 and 4 years attended a long day care service with a pre-school program run in-house by a qualified teacher. Of these children, 57% (40,346) actually participated in these pre-school programs during the census week. This represents 22% of the total number of 3 and 4 year olds in long day care (186,020).

## Staff

For the 2006 Census, an estimated 90,485 paid staff and 11,926 family day care and in home care caregivers (this includes an estimate of non-respondent services) were involved in providing child care in Australian Government approved and supported child care services (see Table F).

**Table F : The distribution of paid staff across the different service types (including an estimate of non-respondent services).**

Service Type	Number of paid staff	%
Long Day Care	57,816	64
Family day care schemes – coordination unit staff only	1,753	2
In home care schemes - coordination unit staff only	203	< 1
Outside school hours care services	14,547	16
Vacation care services	14,579	16
Occasional care services	874	1
Other service types	713	1
TOTAL	90,485	100

Note: Percentages may not add to 100 due to rounding

While these figures represent paid staff, there were also an estimated 1,440 people (this includes an estimate of non-respondent services) assisting these services on an unpaid basis (e.g. volunteers, work experience students, parents and trainees).

<sup>4</sup> Includes pre-school programs run by qualified early childhood education teachers only (excludes one and two year qualifications).

### **Staff per service**

The average number of paid staff per service in long day care centres decreased from 12.1 in 2004 to 11.8 in 2006 (this includes an estimate for non responding services).

### **Formal qualifications**

Sixty-one percent of all long day care staff held a formal qualification in a children's services related field (60% in 2004).

Between 2004 and 2006, the proportion of family day care caregivers with formal qualifications increased from 25% to 31%. The proportion of family day care staff in coordination units with formal qualifications remained consistent at 73%. In 2006, 67% of staff in in home care schemes and 47% of in home care carers had a qualification in a children's services related field.

Of staff in long day care centres that held a formal qualification, 21% held their highest qualification in the field of teaching, 2% in nursing, 77% in a field relating to child care or other children's services and 1% in other relevant fields<sup>56</sup>.

In 2006, 48% of staff in both outside school hours and vacation care services held a formal qualification in a children's services related field. This was an increase on the 40% for outside school hours care and 41% for vacation care reported in 2004.

The proportion of staff with formal qualifications in multifunctional aboriginal children's services increased from 41% to 53% between 2004 and 2006. In 2006, 63% of staff in occasional care services held a formal qualification, compared to 58% in 2004.

### **In-service training**

In the twelve months prior to the 2006 Census, 77% of all staff (excluding those staff working in vacation care services and aboriginal playgroups and enrichment programs) and 94% of caregivers undertook in-service training related to child care, financial or management subjects. This compares with 74% reported for staff and 82% reported for caregivers in the twelve months prior to the 2004 Census.

Of long day care staff who had undertaken in-service training in the previous 12 months, 19% undertook training for additional needs children, while 77% of staff undertook other child care related training courses. Eight per cent undertook management/financial training and 43% participated in other relevant training (e.g. First Aid Certificate)<sup>7</sup>.

5 Includes qualifications in other human welfare and behavioural science fields.

6 Proportions do not add up to 100% due to rounding.

7 Proportions add up to more than 100% as staff may have undertaken more than 1 type of in-service training.



### **Hours worked**

The hours that staff worked varied by service type. In 2006, 60% of staff in long day care centres worked 30 hours or more per week, an increase on the 57% reported in 2004. Within long day care, the Northern Territory had the highest proportion of staff working 30 hours or more per week (70%), followed by Queensland and Western Australia (both 64%). On average long day care centre staff across Australia worked 28 hours and 57 minutes during the reference week of the 2006 Census.

Eighty-six percent of caregivers in family day care centres worked 30 hours a week or more in 2006. This is the same as 2004. For in home care caregivers, 45% worked 30 or more hours a week in 2006, compared to 40% in 2004.

### **Major type of work**

The 2006 Census saw the introduction of a number of Children's Services National Minimum Data Set items. This resulted in definitional changes to the classification of staff. In previous Censuses, child care staff was classified according to whether they spent the majority of their working day caring for children (contact staff) or undertaking administrative/other duties (non-contact staff). In 2006, the distinction was made between 'primary contact staff' who spend the majority of their working day caring for children and 'other contact staff' who undertake a mix of contact/non-contact work. This change in definitions means that data from the 2006 Census is not comparable with previous years.

Eight-five per cent of staff in long day care were in a primary contact role, 7% were classified as 'other contact' and 4% were administrative staff. A further 4% were classified as 'other workers' which includes staff who provide support services (e.g. cook, cleaner).



## Summary Tables





**Table 1: Respondent Services as a Percentage of all Services, by Type of Service, for all States and Territories, 2006**

SERVICES	STATE/TERRITORY																		AUSTRALIA	
	NSW		Vic		Qld		SA		WA		Tas		NT		ACT		No.	%		
	No.	%	No.	%	No.	%	No.	%	No.	%	No.	%	No.	%	No.	%	No.	%		
Long Day Care Services	1745	89	822	89	968	87	222	93	365	86	83	99	49	92	92	98	4346	89		
Family Day Care Schemes	101	99	66	92	84	93	15	100	20	95	9	82	5	100	5	100	305	95		
In-home Care Schemes	19	95	17	94	18	86	2	100	8	89	3	100	1	100	2	100	70	92		
Outside School Hours Care*	600	86	674	83	449	84	238	81	108	80	76	95	39	85	72	96	2256	84		
Vacation Care	407	82	274	79	387	80	184	81	100	71	48	92	29	81	24	73	1453	80		
Occasional Care	41	93	20	100	14	100	2	100	11	100	4	100	1	100	3	75	96	96		
MACS	10	100	3	43	1	33	5	100	5	100	1	100	2	100	0	0	27	82		
Mobiles and Toy Libraries	12	92	5	100	4	100	3	100	1	33	0	0	2	67	0	0	27	87		
Aboriginal Playgroups	4	57	5	100	19	83	2	50	8	80	0	0	3	50	0	0	41	75		
TOTAL SERVICES	2939	88	1886	85	1944	85	673	85	626	83	224	95	131	86	198	93	8621	86		

\* Note: Services offering both before and after school care received one form. For the purpose of the Census, they have been counted as one service, rather than as two separate services.



**Table 2. Number and Percentage Distribution of Children Attending by Type of Service, for all States and Territories, 2006**

CHILDREN	STATE/TERRITORY																		AUSTRALIA	
	NSW		Vic		Qld		SA		WA		Tas		NT		ACT		No.	%		
	No.	%	No.	%	No.	%	No.	%	No.	%	No.	%	No.	%	No.	%				
Long Day Care Services	128023	57	74340	50	98603	56	23473	40	31356	63	8288	44	3092	41	7703	48	374878	53		
Family Day Care Schemes	28581	13	17689	12	16463	9	7295	12	5211	10	3593	19	778	10	1602	10	81212	12		
In-home Care Schemes	1077	0	405	0	773	0	92	0	217	0	414	2	20	0	34	0	3032	0		
Outside School Hours Care	39285	18	37306	25	36784	21	16065	27	5782	12	3476	18	1827	24	5332	33	145857	21		
Vacation Care	22688	10	16727	11	23130	13	11939	20	6275	13	2774	15	1364	18	1463	9	86360	12		
Occasional Care	2468	1	1988	1	929	1	148	0	897	2	167	1	8	0	162	1	6767	1		
MACS	568	0	159	0	40	0	142	0	176	0	89	0	104	1	0	0	1278	0		
Mobiles and Toy Libraries	926	0	545	0	134	0	166	0	23	0	0	0	304	4	0	0	2098	0		
Aboriginal Playgroups	147	0	95	0	564	0	61	0	89	0	0	0	36	0	0	0	992	0		
TOTAL CHILDREN*	223763	100	149254	100	177420	100	59381	100	50026	100	18801	100	7533	100	16296	100	702474	100		

\* Note: This data measures occurrences of care and will include some double counting where children attend more than one service.

**Table 3. Number and Percentage Distribution of Paid Staff, Family Day Care and In-home Care Caregivers by Type of Service, for all State and Territories, 2006**

	STATE/TERRITORY																		AUSTRALIA	
	NSW		Vic		Qld		SA		WA		Tas		NT		ACT		No.	%		
	No.	%	No.	%	No.	%	No.	%	No.	%	No.	%	No.	%	No.	%	No.	%		
PAID STAFF, FDC AND IHC CAREGIVERS	17096	60	11300	57	12861	58	3410	47	4056	63	1183	49	601	50	1421	53	51928	57		
Long Day Care	617	2	325	2	363	2	163	2	106	2	64	3	22	2	33	1	1693	2		
Family Day Care Schemes – Staff only	3632	13	2397	12	2337	10	866	12	642	10	363	15	131	11	301	11	10412	12		
Family Day Care Schemes – Caregivers	49	0	42	0	42	0	8	0	20	0	22	1	3	0	7	0	193	0		
In-home Care Schemes – Staff only	298	1	88	0	202	1	35	0	74	1	89	4	6	1	9	0	801	1		
In-home Care Schemes – Caregivers	3265	11	3012	15	3059	14	1235	17	543	8	315	13	187	16	630	23	12246	14		
Outside School Hours Care	3104	11	2384	12	3211	14	1512	21	761	12	304	13	183	15	270	10	11729	13		
Vacation Care	319	1	187	1	136	1	19	0	104	2	37	2	13	1	21	1	836	1		
Occasional Care	116	0	39	0	13	0	40	1	64	1	14	1	27	2	0	0	313	0		
MACS	55	0	61	0	9	0	26	0	3	0	0	0	10	1	0	0	164	0		
Mobiles and Toy Libraries	13	0	10	0	44	0	9	0	16	0	0	0	9	1	0	0	101	0		
Aboriginal Playgroups	28564	100	19845	100	22277	100	7323	100	6389	100	2391	100	1192	100	2692	100	90416	100		
TOTAL STAFF*																				

\* Note: Proportions for individual service types may not add up to 100 due to rounding.



**Table 4: Number and Percentage Distribution of Families by Type of Service, for all States and Territories, 2006**

FAMILIES	STATE/TERRITORY																		AUSTRALIA	
	NSW		Vic		Qld		SA		WA		Tas		NT		ACT		No.	%		
	No.	%	No.	%	No.	%	No.	%	No.	%	No.	%	No.	%	No.	%	No.	%		
Long Day Care Services	112170	61	63320	53	81221	59	20140	44	26020	65	7118	48	2637	45	6671	50	319297	57		
Family Day Care Schemes	22469	12	13172	11	12225	9	4913	11	4033	10	2714	18	622	11	1252	9	61400	11		
In-home Care Schemes	383	0	122	0	255	0	54	0	80	0	157	1	6	0	13	0	1070	0		
Outside School Hours Care Schemes	30229	16	28028	24	26764	19	11793	26	4385	11	2562	17	1397	24	4106	31	109264	19		
Vacation Care	16731	9	11929	10	16152	12	8146	18	4473	11	1979	13	958	16	1092	8	61460	11		
Occasional Care	2139	1	1743	1	809	1	128	0	783	2	147	1	6	0	141	1	5896	1		
MACS	477	0	133	0	31	0	107	0	126	0	53	0	84	1	0	0	1011	0		
Mobiles and Toy Libraries	618	0	362	0	87	0	130	0	19	0	0	0	188	3	0	0	1404	0		
TOTAL FAMILIES*	185216	100	118809	100	137544	100	45411	100	39919	100	14730	100	5898	100	13275	100	560802	100		

\* Note: This data measures occurrences of care and will include some double counting where children attend more than one service.

**Table 5: Number and Percentage Distribution of Children in Care for Work Related Vs. Non-work Related Reasons, all states and territories, 2006**

LONG DAY CARE SERVICES	STATE/TERRITORY																		AUSTRALIA	
	NSW		Vic		Qld		SA		WA		Tas		NT		ACT		No.	%		
	No.	%	No.	%	No.	%	No.	%	No.	%	No.	%	No.	%	No.	%	No.	%		
Sole parent/guardian work-related *	14344	11	7428	10	14262	15	2893	13	5117	16	925	11	393	13	582	8	45944	12		
Both parents/guardians work-related *	75360	59	45789	62	55135	56	15291	66	17359	56	4612	56	1779	58	5995	78	221320	59		
Sole parent/guardian not work-related	5948	5	3144	4	5157	5	887	4	1440	5	463	6	156	5	97	1	17292	5		
Two parents/guardians, 1 or both not work-related	32070	25	17808	24	23634	24	4048	18	7351	24	2288	28	764	25	1028	13	88991	24		
Total specified	127722	100	74169	100	98188	100	23119	100	31267	100	8288	100	3092	100	7702	100	373547	100		
Not specified	301		171		415		354		89		0		0		1		1331			
TOTAL CHILDREN	128023		74340		98603		23473		31356		8288		3092		7703		374878			

\* Note: 'Work-related' includes parents/guardians who are employed, looking for work, or in study or training.



**Table 6: Number and Percentage Distribution of Children in Care for Work Related Vs. Non-work Related Reasons, all states and territories, 2006**

FAMILY DAY CARE SCHEMES	STATE/TERRITORY																	
	NSW		Vic		Qld		SA		WA		Tas		NT		ACT		AUSTRALIA	
	No.	%	No.	%	No.	%	No.	%	No.	%	No.	%	No.	%	No.	%	No.	%
Sole parent/guardian work-related *	4215	15	3412	19	3247	20	1639	22	888	17	738	21	186	24	306	19	14631	18
Both parents/guardians work-related *	18288	64	10144	57	10384	63	3517	48	2703	52	1973	55	410	53	1083	68	48502	60
Sole parent/guardian not work-related	1714	6	1369	8	789	5	1031	14	430	8	258	7	44	6	93	6	5728	7
Two parents/guardians, 1 or both not work-related	4364	15	2762	16	2043	12	1108	15	1190	23	624	17	138	18	120	7	12349	15
Total specified	28581	100	17687	100	16463	100	7295	100	5211	100	3593	100	778	100	1602	100	81210	100
Not specified	0		2		0		0		0		0		0		0		2	
TOTAL CHILDREN	28581		17689		16463		7295		5211		3593		778		1602		81212	

\* Note: Work-related includes parents/guardians who are employed, looking for work or in study or training.

**Table 7: Number and Percentage Distribution of Children in Care for Work Related Vs. Non-work Related Reasons, all states and territories, 2006**

IN HOME CARE SCHEMES	STATE/TERRITORY																		AUSTRALIA	
	NSW		Vic		Qld		SA		WA		Tas		NT		ACT		No.	%		
	No.	%	No.	%	No.	%	No.	%	No.	%	No.	%	No.	%	No.	%	No.	%		
Sole parent/guardian work-related *	193	18	39	10	150	19	14	22	33	15	108	26	4	20	4	12	545	18		
Both parents/guardians work-related *	569	53	215	53	438	57	36	56	104	48	161	39	16	80	18	53	1557	52		
Sole parent/guardian not work-related	71	7	7	2	33	4	4	6	16	7	55	13	0	0	0	0	186	6		
Two parents/guardians, 1 or both not work-related	244	23	144	36	152	20	10	16	64	29	90	22	0	0	12	35	716	24		
Total specified	1077	100	405	100	773	100	64	100	217	100	414	100	20	100	34	100	3004	100		
Not specified	0		0		0		28		0		0		0		0		28			
<b>TOTAL CHILDREN</b>	<b>1077</b>		<b>405</b>		<b>773</b>		<b>92</b>		<b>217</b>		<b>414</b>		<b>20</b>		<b>34</b>		<b>3032</b>			

\* Note: 'Work-related' includes parents/guardians who are employed, looking for work, or in study or training.



**Table 8: Number and Percentage Distribution of Children in Care for Work Related Vs. Non-work Related Reasons, all states and territories, 2006**

OUTSIDE SCHOOL HOURS CARE SERVICES	STATE/TERRITORY																		AUSTRALIA	
	NSW		Vic		Qld		SA		WA		Tas		NT		ACT		No.	%		
	No.	%	No.	%	No.	%	No.	%	No.	%	No.	%	No.	%	No.	%	No.	%		
Sole parent/guardian work-related*	9933	25	8359	23	9446	26	4417	28	1969	35	873	25	493	27	1070	20	36560	25		
Both parents/guardians work-related*	26812	68	25400	69	23549	64	10616	67	3508	62	2271	66	1234	68	4001	75	97391	67		
Sole parent/guardian not work-related	438	1	765	2	852	2	224	1	50	1	65	2	20	1	54	1	2468	2		
Two parents/guardians, 1 or both not work-related	2025	5	2423	7	2702	7	693	4	175	3	258	7	79	4	207	4	8562	6		
Total specified	39208	100	36947	100	36549	100	15950	100	5702	100	3467	100	1826	100	5332	100	144981	100		
Not specified	77		359		235		115		80		9		1		0		876			
<b>TOTAL CHILDREN</b>	<b>39285</b>		<b>37306</b>		<b>36784</b>		<b>16065</b>		<b>5782</b>		<b>3476</b>		<b>1827</b>		<b>5332</b>		<b>145857</b>			

\* Note: 'Work-related' includes parents/guardians who are employed, looking for work, or in study or training.

**Table 9: Number and Percentage Distribution of Children in Care for Work Related Vs. Non-work Related Reasons, all states and territories, 2006**

VACATION CARE SERVICES	STATE/TERRITORY																		AUSTRALIA	
	NSW		Vic		Qld		SA		WA		Tas		NT		ACT		No.	%		
	No.	%	No.	%	No.	%	No.	%	No.	%	No.	%	No.	%	No.	%	No.	%		
Sole parent/guardian work-related *	6592	30	4481	27	6630	29	3382	29	1888	31	779	28	417	31	237	20	24406	29		
Both parents/guardians work-related *	13597	61	9645	58	14270	63	7293	62	3592	60	1671	60	800	60	926	78	51794	61		
Sole parent/guardian not work-related	594	3	608	4	449	2	415	4	184	3	65	2	54	4	18	2	2387	3		
Two parents/guardians, 1 or both not work-related	1383	6	1787	11	1335	6	745	6	332	6	259	9	69	5	7	1	5917	7		
Total specified	22166	100	16521	100	22684	100	11835	100	5996	100	2774	100	1340	100	1188	100	84504	100		
Not specified	522		206		446		104		279		0		24		275		1856			
TOTAL CHILDREN	22688		16727		23130		11939		6275		2774		1364		1463		86360			

\* Note: 'Work-related' includes parents/guardians who are employed, looking for work, or in study or training.



**Table 10: Number and Percentage Distribution of Children in Care for Work Related Vs. Non-work Related Reasons, all states and territories, 2006**

OCCASIONAL CARE SERVICES	STATE/TERRITORY																		AUSTRALIA	
	NSW		Vic		Qld		SA		WA		Tas		NT		ACT		No.	%		
	No.	%	No.	%	No.	%	No.	%	No.	%	No.	%	No.	%	No.	%	No.	%		
Sole parent/guardian work-related *	211	9	115	6	57	6	22	15	43	5	20	12	1	13	19	12	488	7		
Both parents/guardians work-related *	1193	48	897	45	408	44	87	59	440	49	54	32	7	88	75	46	3161	47		
Sole parent/guardian not work-related	136	6	93	5	40	4	16	11	23	3	25	15	0	0	7	4	340	5		
Two parents/guardians, 1 or both not work-related	928	38	883	44	424	46	23	16	391	44	68	41	0	0	61	38	2778	41		
Total specified	2468	100	1988	100	929	100	148	100	897	100	167	100	8	100	162	100	6767	100		
Not specified	0		0		0		0		0		0		0		0		0			
TOTAL CHILDREN	2468		1988		929		148		897		167		8		162		6767			

\* Note: 'Work-related' includes parents/guardians who are employed, looking for work, or in study or training.

**Table 11: Number and Percentage Distribution of Children in Care for Work Related Vs. Non-work Related Reasons, all States and Territories, 2006**

MACS	STATE/TERRITORY																		AUSTRALIA	
	NSW		Vic		Qld		SA		WA		Tas		NT		ACT		No.	%		
	No.	%	No.	%	No.	%	No.	%	No.	%	No.	%	No.	%	No.	%				
Sole parent/guardian work-related *	99	17	40	25	7	18	14	11	43	24	11	12	21	20	0	0	235	19		
Both parents/guardians work-related *	155	27	43	27	12	30	54	41	92	52	51	57	74	71	0	0	481	38		
Sole parent/guardian not work-related	130	23	47	30	7	18	14	11	15	9	10	11	5	5	0	0	228	18		
Two parents/guardians, 1 or both not work-related	184	32	29	18	14	35	51	38	26	15	17	19	4	4	0	0	325	26		
Total specified	568	100	159	100	40	100	133	100	176	100	89	100	104	100	0	0	1269	100		
Not specified	0		0		0		9		0		0		0		0		9			
<b>TOTAL CHILDREN</b>	<b>568</b>		<b>159</b>		<b>40</b>		<b>142</b>		<b>176</b>		<b>89</b>		<b>104</b>		<b>0</b>		<b>1278</b>			

\* Note: 'Work-related' includes parents/guardians who are employed, looking for work, or in study or training.



**Table 12: Number and Percentage Distribution of Children in Care by Additional Needs Group, all States and Territories, 2006**

LONG DAY CARE SERVICES	STATE/TERRITORY																	
	NSW		Vic		Qld		SA		WA		Tas		NT		ACT		AUSTRALIA	
	No.	%	No.	%	No.	%	No.	%	No.	%	No.	%	No.	%	No.	%	No.	%
Aboriginal or Torres Strait Islander	1777	1	265	0	2232	2	235	1	712	2	64	1	228	7	55	1	5568	1
Children from non-English speaking background	23392	18	10829	15	5999	6	2079	9	2289	7	213	3	221	7	952	12	45974	12
Children with disability	4313	3	1608	2	1882	2	795	3	592	2	234	3	66	2	126	2	9616	3
Parent with disability	588	0	293	0	377	0	141	1	119	0	30	0	8	0	27	0	1583	0
Referred because child at risk	446	0	228	0	273	0	78	0	148	0	29	0	17	1	70	1	1289	0
No special needs	99302	78	61754	83	88533	90	20386	87	27744	88	7760	94	2610	84	6521	85	314610	84
Total specified *	128023		74340		98603		23473		31356		8288		3092		7703		374878	
Not specified	0		0		0		0		0		0		0		0		0	
TOTAL CHILDREN	128023		74340		98603		23473		31356		8288		3092		7703		374878	

\* Note: Total specified is less than the sum of the entries as some children may be in more than 1 category

**Table 13: Number and Percentage Distribution of Children in Care by Additional Needs Group, all States and Territories, 2006**

FAMILY DAY CARE SCHEMES	STATE/TERRITORY																		AUSTRALIA	
	NSW		Vic		Qld		SA		WA		Tas		NT		ACT		No.	%		
	No.	%	No.	%	No.	%	No.	%	No.	%	No.	%	No.	%	No.	%	No.	%		
Aboriginal or Torres Strait Islander	469	2	53	0	280	2	611	8	48	1	47	1	30	4	21	1	1559	2		
Children from non-English speaking background	4693	16	2359	13	554	3	850	12	445	9	141	4	51	7	188	12	9281	11		
Children with disability	598	2	329	2	328	2	237	3	77	1	45	1	8	1	44	3	1666	2		
Parent with disability	128	0	145	1	149	1	193	3	78	1	30	1	2	0	3	0	728	1		
Referred because child at risk	450	2	157	1	145	1	34	0	29	1	30	1	26	3	9	1	880	1		
No special needs	22600	79	14745	83	15090	92	5476	75	4584	88	3310	92	672	86	1343	84	67820	84		
Total specified *	28581		17689		16463		7295		5211		3593		778		1602		81212			
Not specified	0		0		0		0		0		0		0		0		0			
TOTAL CHILDREN	28581		17689		16463		7295		5211		3593		778		1602		81212			

\* Note: Total specified is less than the sum of the entries as some children may be in more than 1 category



**Table 14: Number and Percentage Distribution of Children in Care by Additional Needs Group, all States and Territories, 2006**

IN HOME CARE SCHEMES	STATE/TERRITORY																	
	NSW		Vic		Qld		SA		WA		Tas		NT		ACT		AUSTRALIA	
	No.	%	No.	%	No.	%	No.	%	No.	%	No.	%	No.	%	No.	%	No.	%
Aboriginal or Torres Strait Islander	15	1	5	1	13	2	0	0	0	0	9	2	0	0	1	3	43	1
Children from non-English speaking background	58	5	26	6	41	5	5	5	4	2	3	1	0	0	4	12	141	5
Children with disability	79	7	29	7	76	10	2	2	12	6	32	8	0	0	1	3	231	8
Parent with disability	80	7	30	7	30	4	0	0	16	7	50	12	0	0	0	0	206	7
Referred because child at risk	31	3	3	1	3	0	0	0	3	1	14	3	0	0	0	0	54	2
No special needs	860	80	336	83	627	81	85	92	185	85	340	82	20	100	29	85	2482	82
Total specified*	1077		405		773		92		217		414		20		34		3032	
Not specified	0		0		0		0		0		0		0		0		0	
TOTAL CHILDREN	1077		405		773		92		217		414		20		34		3032	

\* Note: Total specified is less than the sum of the entries as some children may be in more than one category.

**Table 15: Number and Percentage Distribution of Children in Care by Additional Needs Group, all States and Territories, 2006**

OUTSIDE SCHOOL HOURS CARE SERVICES	STATE/TERRITORY														AUSTRALIA			
	NSW		Vic		Qld		SA		WA		Tas		NT		ACT		No.	%
	No.	%	No.	%	No.	%	No.	%	No.	%	No.	%	No.	%	No.	%	No.	%
Aboriginal or Torres Strait Islander	434	1	213	1	717	2	193	1	89	2	40	1	192	11	35	1	1913	1
Children from non-English speaking background	5752	15	4222	11	1564	4	1015	6	215	4	70	2	79	4	391	7	13308	9
Children with disability	963	2	902	2	881	2	625	4	174	3	78	2	38	2	82	2	3743	3
Parent with disability	105	0	138	0	99	0	62	0	13	0	25	1	1	0	2	0	445	0
Referred because child at risk	61	0	62	0	32	0	10	0	19	0	11	0	7	0	7	0	209	0
No special needs	32216	82	31965	86	33597	91	14248	89	5309	92	3280	94	1519	83	4824	90	126958	87
Total specified*	39285		37306		36783		16065		5782		3476		1827		5332		145856	
Not specified	0		0		1		0		0		0		0		0		1	
TOTAL CHILDREN	39285		37306		36784		16065		5782		3476		1827		5332		145857	

\* Note: Total specified is less than the sum of the entries as some children may be in more than one category.



**Table 16: Number and Percentage Distribution of Children in Care by Additional Needs Group, all States and Territories, 2006**

VACATION CARE SERVICES	STATE/TERRITORY																	
	NSW		Vic		Qld		SA		WA		Tas		NT		ACT		AUSTRALIA	
	No.	%	No.	%	No.	%	No.	%	No.	%	No.	%	No.	%	No.	%	No.	%
Aboriginal or Torres Strait Islander	306	1	96	1	516	2	179	1	94	1	27	1	146	11	8	1	1372	2
Children from non-English speaking background	3751	17	1642	10	914	4	802	7	203	3	33	1	84	6	59	4	7488	9
Children with disability	891	4	766	5	786	3	601	5	296	5	57	2	58	4	43	3	3498	4
Parent with disability	147	1	84	1	72	0	98	1	40	1	10	0	9	1	2	0	462	1
Referred because child at risk	75	0	53	0	55	0	43	0	43	1	13	0	11	1	4	0	297	0
No special needs	17771	78	14239	85	20926	91	10356	87	5653	90	2642	95	1088	80	1353	92	74028	86
Total specified *	22688		16727		23111		11939		6275		2774		1364		1463		86341	
Not specified	0		0		19		0		0		0		0		0		19	
TOTAL CHILDREN	22688		16727		23130		11939		6275		2774		1364		1463		86360	

\* Note: Total specified is less than the sum of the entries as some children may be in more than one category.

**Table 17: Number and Percentage Distribution of Children in Care by Additional Needs Group, all States and Territories, 2006**

OCCASIONAL CARE SERVICES	STATE/TERRITORY																		AUSTRALIA	
	NSW		Vic		Qld		SA		WA		Tas		NT		ACT		No.	%		
	No.	%	No.	%	No.	%	No.	%	No.	%	No.	%	No.	%	No.	%	No.	%		
Aboriginal or Torres Strait Islander	43	2	10	1	15	2	1	1	17	2	0	0	0	0	2	1	88	1		
Children from non-English speaking background	457	19	298	15	16	2	30	20	120	13	13	8	1	13	17	10	952	14		
Children with disability	178	7	52	3	37	4	5	3	79	9	2	1	0	0	4	2	357	5		
Parent with disability	22	1	7	0	11	1	3	2	0	0	0	0	0	0	0	0	43	1		
Referred because child at risk	21	1	6	0	7	1	1	1	2	0	0	0	0	0	3	2	40	1		
No special needs	1812	73	1630	82	860	93	109	74	733	82	152	91	7	88	137	85	5440	80		
Total specified *	2468		1988		929		148		897		167		8		162		6767			
Not specified	0		0		0		0		0		0		0		0		0			
TOTAL CHILDREN	2468		1988		929		148		897		167		8		162		6767			

\* Note: Total specified is less than the sum of the entries as some children may be in more than one category.



**Table 18: Number and Percentage Distribution of Children in Care by Additional Needs Group, all States and Territories, 2006**

MACS	STATE/TERRITORY																		AUSTRALIA	
	NSW		Vic		Qld		SA		WA		Tas		NT		ACT		No.	%		
	No.	%	No.	%	No.	%	No.	%	No.	%	No.	%	No.	%	No.	%	No.	%		
Aboriginal or Torres Strait Islander	456	80	159	100	38	95	121	85	128	73	89	100	70	67	0	0	1061	83		
Children from non-English speaking background	7	1	0	0	0	0	50	35	11	6	0	0	17	16	0	0	85	7		
Children with disability	34	6	24	15	0	0	14	10	13	7	5	6	2	2	0	0	92	7		
Parent with disability	7	1	1	1	1	3	3	2	1	1	0	0	0	0	0	0	13	1		
Referred because child at risk	21	4	25	16	0	0	6	4	14	8	13	15	7	7	0	0	86	7		
No special needs	98	17	0	0	2	5	18	13	35	20	0	0	25	24	0	0	178	14		
Total specified*	568		159		40		142		176		89		104		0		1278			
Not specified	0		0		0		0		0		0		0		0		0			
TOTAL CHILDREN	568		159		40		142		176		89		104		0		1278			

\* Note: Total specified is less than the sum of the entries as some children may be in more than one category.

**Table 19: Number and Percentage Distribution of Children in Care by Additional Needs Group, all States and Territories, 2006**

MOBILE AND TOY LIBRARY SERVICES	STATE/TERRITORY																		AUSTRALIA	
	NSW		Vic		Qld		SA		WA		Tas		NT		ACT		No.	%		
	No.	%	No.	%	No.	%	No.	%	No.	%	No.	%	No.	%	No.	%	No.	%		
Aboriginal or Torres Strait Islander	117	13	9	2	33	28	3	2	0	0	0	0	0	121	40	0	0	283	14	
Children from non-English speaking background	23	2	4	1	0	0	1	1	0	0	0	0	140	46	0	0	168	8		
Children with disability	81	9	20	4	0	0	6	4	1	4	0	0	78	26	0	0	186	9		
Parent with disability	5	1	2	0	0	0	1	1	0	0	0	0	0	0	0	0	0	8	0	
Referred because child at risk	0	0	6	1	0	0	0	0	0	0	0	0	0	0	0	0	0	6	0	
No special needs	749	81	506	93	101	86	156	94	22	96	0	0	156	51	0	0	1690	81		
Total specified*	926		545		117		166		23		0		304		0		2081			
Not specified	0		0		17		0		0		0		0		0		17			
TOTAL CHILDREN	926		545		134		166		23		0		304		0		2098			

\* Note: Total specified is less than the sum of the entries as some children may be in more than one category.



**Table 20: Number and Percentage Distribution of Children in Care by Age Groups, all States and Territories, 2006**

LONG DAY CARE SERVICES	STATE/TERRITORY																	
	NSW		Vic		Qld		SA		WA		Tas		NT		ACT		AUSTRALIA	
	No.	%	No.	%	No.	%	No.	%	No.	%	No.	%	No.	%	No.	%	No.	%
< 1 Yr	3861	3	3439	5	4289	4	1323	6	1397	4	433	5	189	6	467	6	15398	4
1 Yr	14135	11	12886	17	14742	15	4452	19	5393	17	1434	17	573	19	1591	21	55206	15
2 Yrs	28750	22	18124	24	22451	23	6136	26	7937	25	1907	23	770	25	1985	26	88060	24
3 Yrs	38469	30	19807	27	25284	26	6318	27	8336	27	2243	27	881	29	1978	26	103316	28
4 Yrs	35873	28	15603	21	18346	19	4636	20	4514	14	1641	20	588	19	1503	20	82704	22
5 Yrs	4692	4	3095	4	6342	6	335	1	1341	4	511	6	59	2	144	2	16519	4
6 Yrs	662	1	405	1	2169	2	91	0	857	3	50	1	23	1	16	0	4273	1
7 Yrs	515	0	305	0	1595	2	61	0	585	2	27	0	4	0	14	0	3106	1
8 Yrs	377	0	216	0	1281	1	36	0	405	1	12	0	2	0	2	0	2331	1
9 Yrs	316	0	138	0	885	1	33	0	298	1	14	0	1	0	0	0	1685	0
10 Yrs	199	0	104	0	535	1	28	0	171	1	4	0	1	0	1	0	1043	0
11 Yrs	109	0	53	0	350	0	16	0	95	0	8	0	0	0	0	0	631	0
12 + Yrs	22	0	24	0	133	0	7	0	26	0	3	0	0	0	0	0	215	0
Total specified	127980	100	74199	100	98402	100	23472	100	31355	100	8287	100	3091	100	7701	100	374487	100
Not specified	43		141		201		1		1		1		1		2		391	
TOTAL CHILDREN	128023		74340		98603		23473		31356		8288		3092		7703		374878	

**Table 21: Number and Percentage Distribution of Children in Care by Age Groups, all States and Territories, 2006**

FAMILY DAY CARE SCHEMES	STATE/TERRITORY																		AUSTRALIA	
	NSW		Vic		Qld		SA		WA		Tas		NT		ACT		No.	%		
	No.	%	No.	%	No.	%	No.	%	No.	%	No.	%	No.	%	No.	%	No.	%		
< 1 Yr	1541	5	777	4	952	6	273	4	196	4	143	4	62	9	84	5	4028	5		
1 Yr	5599	20	2480	14	2783	17	835	11	818	16	497	14	128	18	242	15	13382	16		
2 Yrs	6988	24	3428	19	3136	19	1083	15	1090	21	654	18	161	23	318	20	16858	21		
3 Yrs	5741	20	3383	19	2665	16	1116	15	1155	22	729	20	127	18	282	18	15198	19		
4 Yrs	4070	14	2896	16	1829	11	1025	14	800	15	627	17	101	14	209	13	11557	14		
5 Yrs	1310	5	1305	7	1099	7	471	6	241	5	328	9	41	6	108	7	4903	6		
6 Yrs	864	3	788	4	788	5	425	6	225	4	128	4	19	3	101	6	3338	4		
7 Yrs	711	2	679	4	707	4	414	6	182	3	148	4	23	3	86	5	2950	4		
8 Yrs	572	2	588	3	690	4	353	5	179	3	105	3	20	3	57	4	2564	3		
9 Yrs	471	2	497	3	609	4	313	4	127	2	90	3	9	1	40	2	2156	3		
10 Yrs	339	1	377	2	450	3	306	4	81	2	58	2	6	1	40	2	1657	2		
11 Yrs	216	1	291	2	371	2	242	3	76	1	61	2	7	1	30	2	1294	2		
12 + Yrs	155	1	200	1	384	2	439	6	41	1	25	1	5	1	5	0	1254	2		
Total specified	28577	100	17689	100	16463	100	7295	100	5211	100	3593	100	709	100	1602	100	81139	100		
Not specified	4		0		0		0		0		0		69		0		73			
TOTAL CHILDREN	28581		17689		16463		7295		5211		3593		778		1602		81212			



**Table 22: Number and Percentage Distribution of Children in Care by Age Groups, all States and Territories, 2006**

IN HOME CARE SCHEMES	NSW		Vic		Qld		SA		WA		Tas		STATE/TERRITORY			AUSTRALIA		
	No.	%	No.	%	No.	%	No.	%	No.	%	No.	%	NT	ACT	No.	%		
													No.	%	No.	%		
< 1 YR	70	6	46	12	58	8	7	8	26	12	24	6	3	15	5	15	239	8
1 YR	133	12	35	9	76	10	8	9	28	13	52	13	3	15	10	29	345	11
2 YRS	120	11	56	14	92	12	9	10	34	16	41	10	2	10	4	12	358	12
3 YRS	119	11	45	11	63	8	8	9	26	12	34	8	4	20	2	6	301	10
4 YRS	109	10	46	12	76	10	13	14	22	10	51	12	4	20	4	12	325	11
5 YRS	94	9	26	7	61	8	11	12	16	7	28	7	1	5	2	6	239	8
6 YRS	77	7	24	6	64	8	2	2	17	8	39	9	2	10	4	12	229	8
7 YRS	85	8	26	7	52	7	5	5	9	4	28	7	1	5	1	3	207	7
8 YRS	61	6	23	6	41	5	7	8	6	3	30	7	0	0	0	0	168	6
9 YRS	59	5	16	4	52	7	6	7	6	3	20	5	0	0	1	3	160	5
10 YRS	43	4	20	5	36	5	4	4	7	3	16	4	0	0	0	0	126	4
11 YRS	39	4	17	4	40	5	4	4	6	3	23	6	0	0	0	0	129	4
12 + YRS	68	6	20	5	62	8	8	9	14	6	28	7	0	0	1	3	201	7
Total specified	1077	100	400	100	773	100	92	100	217	100	414	100	20	100	34	100	3027	100
Not specified	0		5		0		0		0		0		0		0		5	
TOTAL CHILDREN	1077		405		773		92		217		414		20		34		3032	

**Table 23: Number and Percentage Distribution of Children in Care by Age Groups, all States and Territories, 2006**

OUTSIDE SCHOOL HOURS CARE SERVICES	STATE/TERRITORY																		AUSTRALIA	
	NSW		Vic		Qld		SA		WA		Tas		NT		ACT		No.	%		
	No.	%	No.	%	No.	%	No.	%	No.	%	No.	%	No.	%	No.	%	No.	%		
< 5 YRS	476	1	129	0	2026	6	146	1	150	3	58	2	28	2	13	0	3026	2		
5 YRS	6129	16	4302	12	4950	13	1994	12	684	12	463	13	315	17	785	15	19622	13		
6 YRS	7234	18	6252	17	5927	16	2491	16	981	17	626	18	365	20	938	18	24814	17		
7 YRS	6995	18	6582	18	5806	16	2557	16	969	17	628	18	308	17	952	18	24797	17		
8 YRS	6272	16	6215	17	5496	15	2426	15	949	16	543	16	283	15	893	17	23077	16		
9 YRS	5204	13	5508	15	4634	13	2168	14	856	15	471	14	231	13	781	15	19853	14		
10 YRS	4069	10	4349	12	3885	11	1957	12	615	11	368	11	172	9	563	11	15978	11		
11 YRS	2471	6	3134	8	2725	7	1378	9	400	7	243	7	81	4	332	6	10764	7		
12 YRS	333	1	675	2	1088	3	801	5	137	2	65	2	30	2	65	1	3194	2		
13 + YRS	102	0	141	0	242	1	140	1	41	1	11	0	14	1	10	0	701	0		
Total specified	39285	100	37287	100	36779	100	16058	100	5782	100	3476	100	1827	100	5332	100	145826	100		
Not specified	0		19		5		7		0		0		0		0		31			
TOTAL CHILDREN	39285		37306		36784		16065		5782		3476		1827		5332		145857			



**Table 24: Number and Percentage Distribution of Children in Care by Age Groups, all States and Territories, 2006**

VACATION CARE SERVICES	STATE/TERRITORY																	
	NSW		Vic		Qld		SA		WA		Tas		NT		ACT		AUSTRALIA	
	No.	%	No.	%	No.	%	No.	%	No.	%	No.	%	No.	%	No.	%	No.	%
< 5 YRS	269	1	50	0	999	4	249	2	130	2	42	2	36	3	5	0	1780	2
5 YRS	3461	15	2000	12	2820	12	1543	13	709	11	387	14	234	17	239	16	11393	13
6 YRS	4090	18	2925	17	3838	17	1860	16	943	15	510	18	246	18	263	18	14675	17
7 YRS	3975	18	2909	17	3672	16	1941	16	1041	17	480	17	241	18	262	18	14521	17
8 YRS	3481	15	2796	17	3518	15	1773	15	987	16	418	15	213	16	222	15	13408	16
9 YRS	3054	13	2439	15	2942	13	1569	13	925	15	377	14	187	14	194	13	11687	14
10 YRS	2183	10	1833	11	2495	11	1328	11	724	12	276	10	112	8	147	10	9098	11
11 YRS	1494	7	1235	7	1741	8	928	8	502	8	191	7	58	4	90	6	6239	7
12 YRS	439	2	347	2	814	4	543	5	215	3	70	3	29	2	21	1	2478	3
13 + YRS	229	1	193	1	291	1	201	2	96	2	23	1	8	1	19	1	1060	1
Total specified	22675	100	16727	100	23130	100	11935	100	6272	100	2774	100	1364	100	1462	100	86339	100
Not specified	13		0		0		4		3		0		0		1		21	
TOTAL CHILDREN	22688		16727		23130		11939		6275		2774		1364		1463		86360	

**Table 25: Number and Percentage Distribution of Children in Care by Age Groups, all States and Territories, 2006**

OCCASIONAL CARE SERVICES	STATE/TERRITORY																		AUSTRALIA	
	NSW		Vic		Qld		SA		WA		Tas		NT		ACT		No.	%		
	No.	%	No.	%	No.	%	No.	%	No.	%	No.	%	No.	%	No.	%	No.	%		
< 1 yr	115	5	80	4	50	5	13	9	49	5	7	4	0	0	5	3	319	5		
1 yr	482	20	323	16	189	20	27	18	171	19	26	16	1	13	25	15	1244	18		
2 YRS	746	30	576	29	281	30	47	32	244	27	42	25	2	25	43	27	1981	29		
3 YRS	654	26	642	32	260	28	32	22	317	35	54	32	4	50	58	36	2021	30		
4 YRS	434	18	307	15	118	13	27	18	108	12	35	21	1	13	30	19	1060	16		
5 YRS	36	1	58	3	31	3	2	1	5	1	3	2	0	0	1	1	136	2		
6 YRS	1	0	1	0	0	0	0	0	2	0	0	0	0	0	0	0	4	0		
7 YRS	0	0	1	0	0	0	0	0	1	0	0	0	0	0	0	0	2	0		
Total specified	2468	100	1988	100	929	100	148	100	897	100	167	100	8	100	162	100	6767	100		
Not specified	0	0	0	0	0	0	0	0	0	0	0	0	0	0	0	0	0	0		
TOTAL CHILDREN	2468		1988		929		148		897		167		8		162		6767			



**Table 26: Number and Percentage Distribution of Children in Care by Age Groups, all States and Territories, 2006**

MACS	STATE/TERRITORY																		AUSTRALIA	
	NSW		Vic		Qld		SA		WA		Tas		NT		ACT		No.	%		
	No.	%	No.	%	No.	%	No.	%	No.	%	No.	%	No.	%	No.	%	No.	%		
< 1 Yr	10	2	3	2	5	13	9	6	9	5	3	3	5	5	0	0	44	3		
1 Yr	57	10	19	12	9	23	20	14	27	15	5	6	22	21	0	0	159	12		
2 Yrs	142	25	28	18	12	30	39	27	38	22	9	10	22	21	0	0	290	23		
3 Yrs	166	29	38	24	9	23	30	21	31	18	10	11	25	24	0	0	309	24		
4 Yrs	167	29	54	34	4	10	43	30	37	21	21	24	15	14	0	0	341	27		
5 Yrs	22	4	3	2	0	0	1	1	10	6	9	10	6	6	0	0	51	4		
6 Yrs	1	0	1	1	1	3	0	0	8	5	9	10	2	2	0	0	22	2		
7 Yrs	2	0	4	3	0	0	0	0	5	3	6	7	3	3	0	0	20	2		
8 Yrs	1	0	5	3	0	0	0	0	4	2	3	3	1	1	0	0	14	1		
9 Yrs	0	0	1	1	0	0	0	0	4	2	7	8	3	3	0	0	15	1		
10 Yrs	0	0	1	1	0	0	0	0	2	1	3	3	0	0	0	0	6	0		
11 Yrs	0	0	1	1	0	0	0	0	1	1	3	3	0	0	0	0	5	0		
12 Yrs	0	0	0	0	0	0	0	0	0	0	1	1	0	0	0	0	1	0		
13 + Yrs	0	0	1	1	0	0	0	0	0	0	0	0	0	0	0	0	1	0		
Total specified	568	100	159	100	40	100	142	100	176	100	89	100	104	100	0	0	1278	100		
Not specified	0		0		0		0		0		0		0		0		0			
TOTAL CHILDREN	568		159		40		142		176		89		104		0		1278			

**Table 27: Number and Percentage Distribution of Children in Care by Age Groups, all States and Territories, 2006**

MOBILE AND TOY LIBRARY SERVICES	STATE/TERRITORY																		AUSTRALIA	
	NSW		Vic		Qld		SA		WA		Tas		NT		ACT		No.	%		
	No.	%	No.	%	No.	%	No.	%	No.	%	No.	%	No.	%	No.	%	No.	%		
< 1 yr	117	13	41	8	7	5	11	7	2	9	0	0	24	8	0	0	202	10		
1 yr	173	19	81	15	16	12	25	15	3	13	0	0	44	15	0	0	342	16		
2 YRS	227	25	124	23	24	18	36	22	8	35	0	0	51	18	0	0	470	23		
3 YRS	213	23	128	23	26	19	40	24	8	35	0	0	46	16	0	0	461	22		
4 YRS	154	17	100	18	26	19	39	23	2	9	0	0	32	11	0	0	353	17		
5 YRS	26	3	31	6	20	15	9	5	0	0	0	0	24	8	0	0	110	5		
6 YRS	5	1	12	2	3	2	3	2	0	0	0	0	19	7	0	0	42	2		
7 YRS	3	0	5	1	1	1	2	1	0	0	0	0	21	7	0	0	32	2		
8 YRS	3	0	4	1	3	2	0	0	0	0	0	0	10	3	0	0	20	1		
9 YRS	2	0	5	1	0	0	1	1	0	0	0	0	5	2	0	0	13	1		
10 YRS	2	0	4	1	6	4	0	0	0	0	0	0	7	2	0	0	19	1		
11 YRS	1	0	5	1	1	1	0	0	0	0	0	0	3	1	0	0	10	0		
12 + YRS	0	0	5	1	1	1	0	0	0	0	0	0	5	2	0	0	11	1		
Total specified	926	100	545	100	134	100	166	100	23	100	0	0	291	100	0	0	2085	100		
Not specified	0		0		0		0		0		0	0	13		0	0	13			
TOTAL CHILDREN	926		545		134		166		23		0	0	304		0	0	2098			



**Table 28: Number and Percentage Distribution of Children in Care by Hours of Attendance, all States and Territories, 2006**

LONG DAY CARE SERVICES	STATE/TERRITORY																		AUSTRALIA	
	NSW		Vic		Qld		SA		WA		Tas		NT		ACT		No.	%		
	No.	%	No.	%	No.	%	No.	%	No.	%	No.	%	No.	%	No.	%	No.	%		
< 10 hrs/week	25288	21	17612	25	20745	22	7082	31	9598	32	2991	38	395	13	1088	14	84799	24		
10 - 19 hrs/week	48635	40	22427	31	30484	32	7334	32	9125	31	2684	34	625	21	1922	26	123236	34		
20 - 29 hrs/week	28798	24	14891	21	21395	23	4455	20	5306	18	1332	17	542	18	1779	24	78498	22		
30 - 39 hrs/week	11252	9	8195	11	11440	12	2104	9	2799	9	572	7	406	14	1215	16	37983	11		
40 - 49 hrs/week	6237	5	6054	8	7809	8	1253	6	2037	7	280	4	651	22	1047	14	25368	7		
50 - 59 hrs/week	2177	2	2373	3	2565	3	406	2	994	3	90	1	368	12	453	6	9426	3		
60 + hrs/week	61	0	161	0	485	1	14	0	30	0	6	0	0	0	0	0	757	0		
Sub-total	122448	100	71713	100	94923	100	22648	100	29889	100	7955	100	2987	100	7504	100	360067	100		
Absent ref. wk	5575		2627		3623		825		1467		333		105		199		14754			
Not specified	0		0		57		0		0		0		0		0		57			
TOTAL CHILDREN	128023		74340		98603		23473		31356		8288		3092		7703		374878			
Average child attendance hours per week	19:01		20:39		20:55		18:09		18:32		15:53		28:55		24:53		19:53			

**Table 29: Number and Percentage Distribution of Children in Care by Hours of Attendance, all States and Territories, 2006**

FAMILY DAY CARE SCHEMES	STATE/TERRITORY																		AUSTRALIA	
	NSW		Vic		Qld		SA		WA		Tas		NT		ACT		No.	%		
	No.	%	No.	%	No.	%	No.	%	No.	%	No.	%	No.	%	No.	%	No.	%		
< 10 hrs/week	9008	33	6965	41	4548	29	2340	33	1778	35	1539	44	148	19	391	25	26717	34		
10 - 19 hrs/week	8403	30	4870	29	4624	29	2044	29	1660	33	1085	31	167	22	437	28	23290	30		
20 - 29 hrs/week	5243	19	2586	15	2918	18	1190	17	806	16	507	15	116	15	260	17	13626	17		
30 - 39 hrs/week	2762	10	1428	8	1810	11	692	10	446	9	238	7	127	17	217	14	7720	10		
40 - 49 hrs/week	1630	6	908	5	1478	9	469	7	273	5	71	2	157	21	229	15	5215	7		
50 - 59 hrs/week	486	2	268	2	444	3	267	4	89	2	18	1	40	5	40	3	1652	2		
60 + hrs/week	26	0	29	0	96	1	32	0	12	0	4	0	7	1	0	0	206	0		
Sub-total	27558	100	17054	100	15918	100	7034	100	5064	100	3462	100	762	100	1574	100	78426	100		
Absent ref. wk	1023		635		545		261		147		131		16		28		2786			
Not specified	0		0		0		0		0		0		0		0		0			
TOTAL CHILDREN	28581		17689		16463		7295		5211		3593		778		1602		81212			
Average child attendance hours per week	18:07		16:26		20:15		18:42		17:00		14:14		26:36		22:04		18:09			



**Table 30: Number and Percentage Distribution of Children in Care by Hours of Attendance, all States and Territories, 2006**

IN HOME CARE SCHEMES	STATE/TERRITORY																		
	NSW		Vic		Qld		SA		WA		Tas		NT		ACT		AUSTRALIA		
	No.	%	No.	%	No.	%	No.	%	No.	%	No.	%	No.	%	No.	%	No.	%	
< 10 hrs/week	254	24	145	36	164	21	23	25	36	78	36	167	43	0	0	13	38	844	28
10 - 19 hrs/week	211	20	119	29	149	19	34	37	27	57	27	107	27	0	0	12	35	689	23
20 - 29 hrs/week	213	20	52	13	124	16	15	16	19	41	19	62	16	0	0	9	26	516	17
30 - 39 hrs/week	97	9	27	7	74	10	5	5	10	21	10	27	7	0	0	0	0	251	8
40 - 49 hrs/week	60	6	38	9	69	9	11	12	8	8	4	19	5	4	20	0	0	209	7
50 - 59 hrs/week	194	18	23	6	144	19	4	4	9	9	4	9	2	12	60	0	0	395	13
60 + hrs/week	35	3	0	0	43	6	0	0	0	0	0	1	0	4	20	0	0	83	3
Sub-total	1064	100	404	100	767	100	92	100	214	100	392	100	20	100	34	100	2987	100	
Absent ref. wk	13		1		6		0		3		22		0		0		45		
Not specified	0		0		0		0		0		0		0		0		0		
TOTAL CHILDREN	1077		405		773		92		217		414		20		34		3032		
Average child attendance hours per week	26:10		19:02		28:13		19:26		17:23		15:39		56:18		13:35		23:34		

**Table 31: Number and Percentage Distribution of Children in Care by Hours of Attendance, all States and Territories, 2006**

OUTSIDE SCHOOL HOURS CARE SERVICES	STATE/TERRITORY																		AUSTRALIA	
	NSW		Vic		Qld		SA		WA		Tas		NT		ACT		No.	%		
	No.	%	No.	%	No.	%	No.	%	No.	%	No.	%	No.	%	No.	%	No.	%		
< 3 hrs/week	3076	8	6537	18	4615	13	3138	20	437	8	804	23	39	2	367	7	19013	13		
3 - 5 hrs/week	10048	26	12863	35	10227	28	5230	33	1705	30	1161	34	227	13	1394	26	42855	30		
6 - 8 hrs/week	8266	22	7030	19	7412	20	3327	21	1257	22	737	22	242	13	1200	23	29471	20		
9 - 11 hrs/week	5551	14	4310	12	5130	14	1821	11	806	14	392	11	233	13	836	16	19079	13		
12 - 15 hrs/week	6735	18	3888	11	5536	15	1665	10	926	16	281	8	866	48	1228	23	21125	15		
16 + hrs/week	4729	12	2291	6	3479	10	807	5	500	9	47	1	198	11	251	5	12302	9		
Sub-total	38405	100	36919	100	36399	100	15988	100	5631	100	3422	100	1805	100	5276	100	143845	100		
Absent ref. wk	867		330		370		77		145		54		22		53		1918			
Not specified	13		57		15		0		6		0		0		3		94			
TOTAL CHILDREN	39285		37306		36784		16065		5782		3476		1827		5332		145857			
Average child attendance hours per week	8:55		6:41		7:57		6:22		8:10		5:34		11:24		8:11		7:42			



**Table 32: Number and Percentage Distribution of Children in Care by Hours of Attendance, all States and Territories, 2006**

VACATION CARE SERVICES	STATE/TERRITORY																							
	NSW		Vic		Qld		SA		WA		Tas		NT		ACT		AUSTRALIA							
	No.	%	No.	%	No.	%	No.	%	No.	%	No.	%	No.	%	No.	%	No.	%	No.	%				
< 1 day	142	1	73	0	67	0	84	1	5	0	10	0	42	3	4	0	427	0						
1 day	5173	23	4158	25	4780	21	3221	27	1316	21	757	27	122	9	268	18	19795	23						
2 days	5764	25	4213	25	5519	24	3214	27	1594	25	804	29	164	12	282	19	21554	25						
3 days	4476	20	3211	19	4506	19	2258	19	1249	20	542	20	138	10	288	20	16668	19						
4 days	2672	12	2081	12	3211	14	1305	11	707	11	247	9	115	8	171	12	10509	12						
5 days	4422	19	2964	18	5034	22	1828	15	1394	22	409	15	781	57	447	31	17279	20						
Sub-total	22647	100	16700	100	23117	100	11874	99	6265	100	2799	100	1362	100	1460	100	86194	100						
Absent ref. wk	39		27		13		29		10		5		2		3		128							
Total specified	22686		16727		23130		11903		6275		2774		1364		1463		86322							
Not specified	0		0		0		0		0		0		0		0		0							
TOTAL CHILDREN	22688		16727		23130		11939		6275		2774		1364		1463		86360							
Average child attendance days per week	2.8		2.7		2.9		2.6		2.9		2.5		3.9		3.2		2.8							

**Table 33: Number and Percentage Distribution of Children in Care by Hours of Attendance, all States and Territories, 2006**

OCCASIONAL CARE SERVICES	STATE/TERRITORY												AUSTRALIA					
	NSW		Vic		Qld		SA		WA		Tas		NT		ACT		AUSTRALIA	
	No.	%	No.	%	No.	%	No.	%	No.	%	No.	%	No.	%	No.	%	No.	%
1hr/week	21	0.9	44	2.2	2	0.2	1	0.7	8	0.9	0	0.0	0	0.0	2	1.2	78	1.2
2hrs/week	75	3.1	149	7.5	14	1.5	8	5.5	61	6.9	4	2.5	0	0.0	13	8.0	324	4.8
3hrs/week	154	6.3	331	16.6	62	6.7	8	5.5	116	13.0	15	9.4	0	0.0	12	7.4	698	10.4
4hrs/week	198	8.1	223	11.2	62	6.7	6	4.1	92	10.3	12	7.5	0	0.0	12	7.4	605	9.0
5hrs/week	142	5.8	151	7.6	41	4.4	17	11.6	53	6.0	19	11.9	0	0.0	13	8.0	436	6.5
6hrs/week	379	15.5	210	10.6	110	11.9	15	10.3	52	5.8	22	13.8	0	0.0	14	8.6	802	11.9
7hrs/week	200	8.2	157	7.9	51	5.5	4	2.7	50	5.6	3	1.9	0	0.0	15	9.3	480	7.1
8hrs/week	173	7.1	98	4.9	75	8.1	11	7.5	120	13.5	4	2.5	0	0.0	10	6.2	491	7.3
9hrs/week	39	1.6	78	3.9	28	3.0	3	2.1	21	2.4	24	15.1	0	0.0	9	5.6	202	3.0
10-19 hrs/week	755	31	368	19	295	32	56	38	200	22	42	26	5	63	44	27	1765	26
20-29 hrs/week	211	9	116	6	106	11	14	10	70	8	10	6	1	13	12	7	540	8
30+ hrs/week	97	4	63	3	77	8	3	2	47	5	4	3	2	25	6	4	299	4
Sub-total	2444	100	1988	100	923	100	146	100	890	100	159	100	8	100	162	100	6720	100
Absent ref. wk	24		0		6		2		7		8		0		0		47	
Not specified	0		0		0		0		0		0		0		0		0	
TOTAL CHILDREN	2468		1988		929		148		897		167		8		162		6767	
Average child attendance hours per week	10:53		8:15		12:32		10:54		10:01		9:34		16:52		10:06		10:11	



**Table 34: Number and Percentage Distribution of Children in Care by Hours of Attendance, all States and Territories, 2006**

MACS	STATE/TERRITORY																							
	NSW		Vic		Qld		SA		WA		Tas		NT		ACT		AUSTRALIA							
	No.	%	No.	%	No.	%	No.	%	No.	%	No.	%	No.	%	No.	%	No.	%						
< 5 hrs/week	7	1	4	3	1	3	3	2	7	4	6	7	5	5	0	0	33	3						
5 - 9 hrs/week	91	17	34	22	4	10	17	13	27	16	25	28	12	12	0	0	210	17						
10 - 14 hrs/week	132	24	23	15	4	10	29	22	16	10	2	2	11	11	0	0	217	18						
15 - 19 hrs/week	152	28	13	9	9	23	31	23	28	17	41	46	6	6	0	0	280	23						
20 - 24 hrs/week	98	18	15	10	8	20	12	9	17	10	3	3	8	8	0	0	161	13						
25 - 29 hrs/week	20	4	5	3	5	13	12	9	14	8	9	10	17	17	0	0	82	7						
30 - 34 hrs/week	17	3	15	10	7	18	13	10	13	8	2	2	9	9	0	0	76	6						
35 - 39 hrs/week	13	2	12	8	2	5	11	8	9	5	0	0	11	11	0	0	58	5						
40 - 44 hrs/week	18	3	7	5	0	0	6	4	19	11	0	0	15	15	0	0	65	5						
45 - 49 hrs/week	0	0	6	4	0	0	0	0	16	10	1	1	5	5	0	0	28	2						
50 + hrs/week	0	0	18	12	0	0	0	0	0	0	0	0	1	1	0	0	19	2						
Sub-total	548	100	152	100	40	100	134	100	166	100	89	100	100	100	0	0	1229	100						
Absent ref. wk	20		7		0		8		10		0		4		0		49							
Not specified	0		0		0		0		0		0		0		0		0							
TOTAL CHILDREN	568		159		40		142		176		89		104		0		1278							
Average child attendance hours per week	17:08		23:25		20:46		19:32		23:27		15:09		25:47		0		19:42							

**Table 35: Number and Percentage Distribution of Services Offering Pre-school Programs and Children Participating in These Programs, all States and Territories, 2006**

LONG DAY CARE SERVICES	STATE/TERRITORY														AUSTRALIA				
	NSW		Vic		Qld		SA		WA		Tas		NT		ACT		No.	%	
	No.	%	No.	%	No.	%	No.	%	No.	%	No.	%	No.	%	No.	%	No.	%	
Services....																			
In-house pre-school program only*	874	50	315	38	133	14	15	7	7	2	5	6	2	4	24	26	1375	32	
Children taken out to local pre-school only	4	0	95	12	212	22	72	32	156	43	11	13	22	45	17	18	589	14	
Both in-house pre-school program and children taken out to local pre-school	4	0	20	2	62	6	6	3	8	2	3	4	0	0	1	1	104	2	
None of the above	863	49	392	48	561	58	129	58	194	53	64	77	25	51	50	54	2278	52	
Total specified	1745	100	822	100	968	100	222	100	365	100	83	100	49	100	92	100	4346	100	
Not specified	0	0	0	0	0	0	0	0	0	0	0	0	0	0	0	0	0	0	
TOTAL SERVICES	1745		822		968		222		365		83		49		92		4346		
Children...																			
Children aged 3-4 years attending a services with an in-house pre-school program	41821		16101		9904				740		374		90		1124		70154		
Children aged 3-4 participating in an in-house pre-school programs	29380		5095		4181				323		174		18		732		40346		
Number of children taken out to a local pre-school	130		911		1678		1006		928		101		290		131		5175		

Note: "in-house pre-school" refers to pre-school programs run in house by a qualified early childhood teacher. Excludes 1 and 2 year qualifications.

\* Note: excludes children going independently to pre-school with their families outside booked hours of care.



**Table 36: Number and Percentage Distribution of Carers with Children That Went to Pre-school During the Collection Week and Number of Children all States and Territories, 2006**

FAMILY DAY CARE SCHEMES	STATE/TERRITORY																		AUSTRALIA	
	NSW		VIC		QLD		SA		WA		TAS		NT		ACT		No.	%		
	No.	%	No.	%	No.	%	No.	%	No.	%	No.	%	No.	%	No.	%	No.	%		
Carers with children that went to pre-school during booked hours+	507	14	798	33	538	23	182	21	229	36	145	40	48	37	77	26	2524	24		
Carers with children that did not go to pre-school during booked hours	3125	86	1599	67	1799	77	684	79	413	64	218	60	83	63	224	74	8145	76		
Total specified	3632	100	2397	100	2337	100	866	100	642	100	363	100	131	100	301	100	10669	100		
Not Specified	0		0		0		0		0		0		0		0		0			
TOTAL CARERS	3632		2397		2337		866		642		363		131		301		10669			
Children...																				
Children who went to pre-school during booked hours*	926		1224		702		261		332		332		66		90		3933			

+ Note: refers to the number of carers who had children in their care who went to pre-school in the collection week during the hours booked with that carer. Excludes the carers own children or children going to pre-school independently with their families outside booked hours.

\* Note: refers to the number of children who went to pre-school during the hours booked with their carer. Excludes the carers own children or children going to pre-school independently with their families outside booked hours.

**Table 37: Number and Percentage Distribution of Carers with Children That Went to Pre-school During the Collection Week and Number of Children all States and Territories, 2006**

IN HOME CARE SCHEMES	STATE/TERRITORY														AUSTRALIA			
	NSW		VIC		QLD		SA		WA		TAS		NT		ACT		No.	%
	No.	%	No.	%	No.	%	No.	%	No.	%	No.	%	No.	%	No.	%	No.	%
Carers with children that went to pre-school during booked hours+	23	8	17	19	42	21	6	21	6	8	21	24	0	0	0	0	115	15
Carers with children that did not go to pre-school during booked hours	267	92	71	81	160	79	23	79	68	92	68	76	6	100	9	100	672	85
Total specified	290	100	88	100	202	100	29	100	74	100	89	100	6	100	9	100	787	100
Not Specified	8		0		0		6		0		0		0		0		14	
TOTAL CARERS	298		88		202		35		74		89		6		9		801	
Children...																		
Children who went to pre-school*	34		19		51		7		6		27		0		0		144	

+ Note: refers to the number of carers who had children in their care who went to pre-school in the collection week during the hours booked with that carer. Excludes the carers own children or children going to pre-school independently with their families outside booked hours.

\*Note: refers to the number of children who went to pre-school during the hours booked with their carer. Excludes the carers own children or children going to pre-school independently with their families outside booked hours.

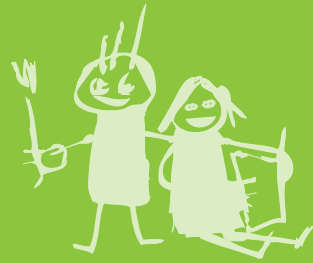


**Table 38: Number and Percentage Distribution of Services Offering Pre-school Programs and Children Participating in These Programs, all States and Territories, 2006**

OCCASIONAL CARE SERVICES	STATE/TERRITORY																		AUSTRALIA	
	NSW		Vic		Qld		SA		WA		Tas		NT		ACT		No.	%		
	No.	%	No.	%	No.	%	No.	%	No.	%	No.	%	No.	%	No.	%	No.	%		
Services...																				
In-house pre-school program only*	9	22	3	15	2	14	0	0	0	0	0	0	0	0	0	0	0	14	15	
Children taken out to local pre-school only	0	0	1	5	0	0	0	0	2	18	0	0	0	0	0	0	0	3	3	
Both in-house pre-school program and children taken out to local preschool	0	0	0	0	0	0	0	0	0	0	0	0	0	0	0	0	0	0	0	
None of the above	32	78	16	80	12	86	2	100	9	82	4	100	1	100	3	100	79	82		
Total specified	41	100	20	100	14	100	2	100	11	100	4	100	1	100	3	100	96	100		
Not specified	0		0		0		0		0		0		0		0		0			
TOTAL SERVICES	41		20		14		2		11		4		1		3		96			
Children...																				
Children aged 3-4 years attending a services with an in-house pre-school program	299		37		154		0		0		0		0		0		490			
Children aged 3-4 participating in an in-house pre-school program	239		85		33		0		0		0		0		0		357			
Number of children taken out to a local pre-school	0		7		0		0		7		0		0		0		14			

Note: "in-house pre-school program" refers to pre-school programs run in house by a qualified early childhood teacher. Excludes 1 and 2 year qualifications.

\*Note: excludes children going independently to pre-school with their families outside booked hours of care.



# Appendices





## Appendix A – Glossary

**Aboriginal Playgroups and Enrichment Programs:** Informal self-help gatherings set up by parents to provide their very young children with opportunities to take part in group socialisation and development activities. They are run on culturally appropriate lines, encouraging children to learn and appreciate their traditions.

**Additional Needs Groups:** The following groups within the population have been designated as having a high priority for funded child care:

- ▶ children at risk of serious abuse or neglect
- ▶ children in Aboriginal or Torres Strait Islander families
- ▶ children from families with a culturally or linguistically diverse background. This includes children whose parents or guardians speak a language other than English at home.
- ▶ disability related care—children who have a continuing disability including intellectual, sensory, or physical impairment, or children in families which include a disabled person

**Age:** Age of child as at the reference week.

**Allowable Absences:** Child Care Benefit (CCB) is paid for up to 30 allowable absence days for each child per financial year across all approved long day care, family day care, in home care and specialised outside school hours care services. Allowable absences can be taken for any reason. An absence from an occasional care service can be claimed where the session of care from which a child was absent had been booked and paid by the parent.

**Approved Care:** Approved care is child care approved by the Australian Government because it meets certain standards and requirements. This includes having a license to operate, qualified and trained staff, being open certain hours and meeting health, safety and other quality standards. Approved care services are approved by the Australian Government to accept Child Care Benefit directly from the Family Assistance Office on behalf of parents. This means that parents pay less out-of-pocket costs for child care.

There are several types of approved child care services including long day care, family day care, in home care, outside school hours care, vacation care and occasional care.

**Assessed Income:** Assessed income is weekly family adjusted income. Family adjusted income comprises family taxable income, adding in net rental property losses, tax-free pensions and benefits, the value of any adjusted fringe benefits exceeding \$1,000, non-taxable foreign income, and subtracting any amounts a customer pays in child maintenance.

**Child care Assistance:** Child care Assistance was a means tested payment to assist low and middle income families with the cost of child care. Child care Assistance was paid by the Australian Government to approved child care services on behalf of eligible families so fees could be reduced at the time of care. From 1 July 2000 this payment was subsumed (along with Child care Cash Rebate) into the Child Care Benefit.

**Child Care Benefit (CCB):** A payment made by the Australian Government to families to assist with the cost of child care. CCB can be paid to approved child care services on behalf of eligible families so fees can be reduced at the time of care. Alternatively, CCB may be claimed as a lump sum at the end of each financial year by eligible families who used approved care.

**Child Care Cash Rebate:** The Child Care Cash Rebate paid families a percentage of their work-related child care costs. Care must have been provided by carers who were registered with the Health Insurance Commission. Child Care Cash Rebate provided families with cash reimbursement after they had paid for child care.

**Child Care Tax Rebate (CCTR):** An annual payment (or tax offset before 1 July 2006) made by the Australian Government to assist eligible working families with the cost of child care.

**Children Attending:** Those children who attended a service during the reference week or who regularly attend but were absent in that week and have paid for the place.

**Children's Services National Minimum Data Set (CSNMDS):** A common set of data items, definitions and data standards pertaining to children's services agreed to by all jurisdictions. The CSNMDS was developed by the Children's Services Data Working Group which includes representatives from a number of commonwealth and state and territory government departments.

Disabled Supplementary Services Program (DSUPS). An extra payment to family day care and in home care carers who care for children with disabilities or ongoing high support needs. From July 1st 2006 this program was replaced with the Inclusion Support Subsidy (ISS)

**Equivalent full-time place:** Care provided by a family day care or in home care service for 35 hours per week.

**Family Day Care Scheme:** A family day care scheme is a network of experienced caregivers who provide care and developmental activities in their own homes for other people's young children. Schemes are administered and supported by central coordination units.

**Fees:** The Australian Government Census of Child Care Services defines a week of care as being equal to 50 hours for Long Day Care, Family Day Care and Vacation care. Fees are reported on a sessional basis For Outside School Hours Care and on an hourly basis for Occasional Care and In Home Care.

**Hours Attended:** Refers to actual hours children attended during the reference week. For children who usually attend but are absent during the reference week and have paid for the place, zero hours are recorded.

**Hours Paid:** Refers to hours paid for child care during the reference week. The number of hours paid will be different from hours attended if the service charge fees when a child is absent from care. For more information on absences see 'Allowable Absences'.

**Inclusion Support Subsidy (ISS):** assists Australian Government-funded child care services to support the inclusion of children with on-going high support needs into mainstream child care. This includes children from culturally and linguistically diverse backgrounds, including refugee children; children with ongoing high support needs, including those with a disability; and Aboriginal or Torres Strait Islander children.

**Inclusion and Professional Support Program (IPSP):** an integrated and consolidated approach to meeting the inclusion and professional support needs of child care services. The aim of the program is to promote and maintain high quality child care and inclusion for children in child care services by increasing the skill level of carers and service staff in line with nationally consistent priorities.

**In home care:** Where an approved carer provides care in the child's home. Families eligible for in home care include families where the parent/s or child has an illness/disability, families in rural or remote areas and parents working shift work or non-standard hours, families with multiple births (more than two) and/or more than two children under school age, or with a breastfeeding mother working from home.

**Jobs, Education and Training (JET) Program:** The JET Program provides additional assistance to people receiving pensions or payments through Centrelink because they are sole parents, carers, widowed or low income families.

**Long Day Care Service:** Long day care is a centre based form of child care service. Long day care services provide quality all day or part-time care for children of working families and the general community. Private operators, local councils, community organisations, employers or non-profit organisations may run these services.

**Mobile Children's Service:** Mobile children's services are mobile resource units carrying children's services to families in rural and remote areas. They offer occasional care, school holiday care, playgroup sessions, child care, activities for older children, and toy and book library services. They also provide support and advice for parents, including health, social support, welfare and community needs. They may be linked with toy library services.

**Multifunctional Aboriginal Children's Service (MACS):** MACS is a service designed to help Aboriginal communities with their child care needs as well as with social and development needs. These services can include different types

of child care depending on the community needs (eg. playgroups, centre based long day care, occasional care, and outside school hours care).

**Multifunctional Children's Service:** Multifunctional children's services offer a range of child care services from a single centre, for children 0-12 years in rural and remote areas to meet the care needs of both working and non-working parents.

**Occasional Care Service:** Provides care mainly for non-school children. These services cater mainly for the needs of families who require short term care for their children. This Census includes occasional care centres funded prior to August 1986 and centres receiving the formula funding introduced in August 1986.

**Outside School Hours Care Service:** Outside school hours care services provide care for school aged children before and/or after school during the school term. Some services also provide care on 'pupil free' days. The services usually make use of established facilities such as schools, community halls, and recreation centres. For the purpose of the Census, services offering both before and after school hours care have been counted as one service, rather than two separate services.

**Priority of Access:** When the 2006 Census was conducted the Australian Government's Priority of Access Guidelines for services were as follows (in descending order):

- a child at risk of serious abuse or neglect
- a child of a single parent who satisfies, or of parents who both satisfy, the work/training/study test under section 14 of the Family Assistance Act.
- any other child.

Within each category the following children are to be given priority: children in Aboriginal or Torres Strait Islander families; children in families which include a person with a disability; children in families on low incomes; children in families from culturally or linguistically diverse backgrounds; children in socially isolated families; children of single parents.

**Qualifications in a children's services related field:** Include qualifications in the fields of teaching (early childhood related, primary or other), child care and other children's services, nursing (including Mothercraft Nursing), human welfare studies and services, behavioural sciences and any other child care related qualification. Qualifications may be held at the level of post graduate degree, graduate diploma or graduate certificate, bachelor degree, advanced diploma, diploma, Certificate III or IV, Certificate level I or II, or other relevant certificate.

**Service Types:** This refers to the type of child care being offered eg. centre based long day care, family day care, outside school hours care.

**Supported Care:** Australian Government supported child care refers to service types which receive funding from the Australian Government but are not

approved services (see definition of approved care). Service types which are in this category are mobile services and toy libraries, multifunctional aboriginal children's services and Aboriginal Playgroups.

These services are not licensed and are not required to meet quality assurance standards. Parents using these services are therefore not eligible to receive the Child Care Benefit (CCB) or Child Care Tax Rebate (CCTR).

**Special Needs Subsidy Scheme (SNSS):** Assists Australian Government-funded child care services to support the inclusion of children with high ongoing support needs into mainstream child care. This includes children with diagnosed disabilities, children undergoing continuing assessment for disabilities or developmental delay, and refugee children who have been subjected to torture or trauma.

**Staff:** Includes all paid staff and unpaid helpers who worked for the service during the reference week.

**Supplementary Services (SUPS) Program:** Assistance is available free of charge to child care services to build skills and resources to ensure the successful inclusion of children with additional needs. The priority groups are children with a disability, Aboriginal or Torres Strait Islander children, Australian South Sea Islander children and children from culturally and linguistically diverse backgrounds.

**Toy Library Services:** Toy libraries lend toys and games to children's services and give advice on their appropriateness to a child's developmental stage. They enable services to provide a variety of suitable toys at low cost. They are linked with mobile children's services.

**Utilisation:** Utilisation refers to the level of usage of a service, and can be measured in a number of ways:

- ▶ capacity to take on more children
- ▶ average hours of attendance per child
- ▶ total hours of attendance over time in comparison to the growth in places.

In this publication, utilisation is defined as total child hours paid for (where that is collected, otherwise total child hours attended) as a percentage of total capacity.

**Vacation Care Service:** Vacation care services provide care for school children during the school holidays.

**Work Related Care:** Care required for children when both parents, or a sole parent, are in the labour force (full-time or part-time), actively seeking work, studying or training for employment. Includes one parent with a disability and not working and the other parent work related.





## Appendix B – Full list of data items in the Census

The following information from the 2006 Census covers all service types and may relate to some services only. The information was classified by:

### SERVICE INFORMATION

Number of services  
Weeks of operation per year  
Hours of operation per day/session  
Weekend opening  
Physical setting  
How service is managed  
Service owned or managed by corporation  
Recommended fees by age  
Fees charged by age  
Standard sessional fee  
Usual hours per session  
Number of children for whom SNSS/ISS assistance was received  
SUPS/IPSP assistance asked for  
Type(s) of SUPS/IPSP assistance received  
Number of children per special needs groups assisted through SUPS/IPSP  
Carers receiving DSUPS/ISS payments  
Levies charge to parents (e.g. administration levy, caregiver levy)  
Funding from Australian Government Child Care Support Program  
Type of services to which Australian Government Child Care Support Program relates  
Licensed places  
Approved Equivalent full time (EFT) places  
Approved EFT places offered  
CCB places offered at any one time  
Maximum number of children to whom child care is offered at any one time  
Employer provided places  
Number of carers registered with service  
Provide pre-school program in-house  
Number of children taken to local pre-school  
Type(s) of services provided  
Home visits conducted  
Use of bus to transport children to and from centre  
Source of payment for transport bus  
Kilometres travelled in reference week  
Kilometres travelled in the year prior to the reference week  
Links to other service types  
Location where activity was provided (MOB services only)

## CHILD INFORMATION

Number of children  
Number of families  
Ages of children  
Sex of children  
Family type  
Parental/Guardian working arrangements  
Percentage of CCB (if applicable) provided for child during collection week  
Number of children eligible for CCB in child's family  
Pre-school received as a service activity  
Children taken out to preschool  
Hours charged for child during collection week  
Actual hours of attendance during collection week  
Attendance at school  
Pattern of attendance (MACS only)  
Fees paid for child (MACS only)  
Overnight care  
Weekend care  
Priority groups

- ▶ parent(s) with a disability
- ▶ referred because child at risk of serious abuse/neglect
- ▶ Aboriginal or Torres Strait Islander
- ▶ Childs parents of guardians speak a language other than English at home

Need for and areas of additional assistance

## STAFF INFORMATION

Number of staff  
Sex  
Age  
Cultural background  
Hours worked during collection week  
Paid or unpaid  
Main type of work performed during collection week  
Role during collection week  
Proportion of time spend on administration and client/carer support  
Employment status  
Employment/contract type  
Years of experience in children's services sector  
Years of employment with service  
Years employed as a contact worker  
Field of study of highest qualification  
Highest level of attainment in a children's services related field  
Current study  
In-service training in the year prior to the reference week

## ADDITIONAL INFORMATION FOR CAREGIVERS

Number of caregivers own children (under 5 years) in their care during hours that care was provided

Caregiver location

Whether recommended fees are charged





## Appendix C

### Further information

The Australian Government Department of Education, Employment and Workplace Relations would be pleased to provide you with further information relating to this publication.

For enquires please contact

**E-mail:** [childcare.census@deewr.gov.au](mailto:childcare.census@deewr.gov.au)

This publication does not include all statistics collected in the 2006 Australian Government Census of Child Care Services. Some unpublished tables are available upon request. See Appendix B for a full list of the items that were collected.

For general information or queries on Australian Government Child Care Support please visit <http://www.deewr.gov.au> or phone the Australian Government Department of Education Employment and Workplace Relations on 1300 363 079\*\*

\*\* For the cost of a local call unless calling from a mobile phone.



2006 CENSUS OF CHILD CARE SERVICES